

Nur für Forschungszwecke

EEA1 Rekombinanter Antikörper

Katalog-Nr.:81245-1-RR



Allgemeine Informationen

Katalog-Nr.: 81245-1-RR	GenBank-Zugangsnummer: NM_003566	Reinigungsmethode: Protein-A-Reinigung
Größe: 100ul , Konzentration: 1000 µg/ml von8411	GeneID (NCBI): early endosome antigen 1	CloneNo.: 2C11
Nanodrop;	Vollständiger Name: early endosome antigen 1	Empfohlene Verdünnungen: WB 1:5000-1:50000
Wirt: Kaninchen	Berechnete Masse: 162 kDa	
Isotyp: IgG	Beobachtete Masse: 162 kDa	
Immunogen Katalognummer: AG28814		

Anwendungen

Geprüfte Anwendungen: WB, ELISA	Positivkontrollen: WB : A431-Zellen, HeLa-Zellen, HepG2-Zellen, Jurkat-Zellen, K-562-Zellen, LNCaP-Zellen, NIH/3T3-Zellen
Getestete Reaktivität: Human, Maus, Ratte	

Hintergrundinformationen

Early endosome antigen 1 (EEA1) is a marker of early endosomes and has an important role in endosomal trafficking. EEA1 contains coiled-coil regions and an FYVE-type zinc finger which interacts with phosphatidylinositol-3-phosphate. EEA1 functions as a Rab5 effector, mediates endosome docking and, together with SNAREs, leads to membrane fusion.

Lagerung

Lagerungsbedingungen:
Bei -20°C lagern.
Lagerungspuffer:
PBS mit 0.02% Natriumazid und 50% Glycerin pH 7.3.
Aliquotieren ist nicht notwendig bei -20°C Lagerung

***** 20ul-Größen enthalten 0.1% BSA**

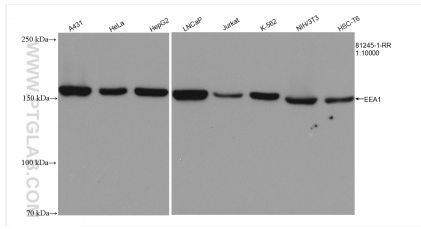
For technical support and original validation data for this product please contact:

T: 1 (888) 4PTGLAB (1-888-478-4522) (toll free in USA), or 1(312) 455-8498 (outside USA)

E: proteintech@ptglab.com
W: ptglab.com

This product is exclusively available under Proteintech Group brand and is not available to purchase from any other manufacturer.

Ausgewählte Validierungsdaten



Various lysates were subjected to SDS PAGE followed by western blot with 81245-1-RR (EEA1 antibody) at dilution of 1:10000 incubated at room temperature for 1.5 hours.