

Nur für Forschungszwecke

Phospho-TAU (Ser404) Rekombinanter Antikörper



Katalog-Nr.: 81383-1-RR

Allgemeine Informationen

Katalog-Nr.: 81383-1-RR	GenBank-Zugangsnummer: BC000558	Reinigungsmethode: Protein-A-Reinigung
Größe: 100ul, Konzentration: 400 µg/ml von Nanodrop;	GeneID (NCBI): 4137	CloneNo.: 5I16
Wirt: Kaninchen	Vollständiger Name: microtubule-associated protein tau	Empfohlene Verdünnungen: WB 1:5000-1:50000
Isotyp: IgG	Berechnete Masse: 37-46, 79-81 kDa	
	Beobachtete Masse: 45-55 kDa	

Anwendungen

Geprüfte Anwendungen: WB, ELISA	Positivkontrollen: WB : Maushirngewebe, λ phosphatase treated mouse brain tissue
Getestete Reaktivität: Human, Maus	

Hintergrundinformationen

Tau (tubulin-associated unit) is a microtubule-associated protein (also known as MAPT), expressed mainly in neurons of the central nervous system. Its primary function is to modulate microtubule dynamics for maintaining axonal cytoskeleton. The Tau protein has six isoforms produced from a single gene through alternative RNA splicing. Isoforms differ in number of inserts at the N-terminal half and the number of repeats at the C-terminal half (3 repeat-3R; 4 repeat-4R). Tau is hyperphosphorylated during aging and in age-related neurodegenerative diseases such as Alzheimer's disease (AD) and fronto-temporal dementia. Hyperphosphorylation of Tau leads to the formation of neurofibrillary tangles (NFT) in the neurons and glia cells, which is one of the hallmarks of AD.

Lagerung

Lagerungsbedingungen:
Bei -20°C lagern. Nach dem Versand ein Jahr lang stabil
Lagerungspuffer:
PBS mit 0.02% Natriumazid und 50% Glycerin pH 7.3.
Aliquotieren ist nicht notwendig bei -20°C Lagerung

***** 20ul-Größen enthalten 0.1% BSA**

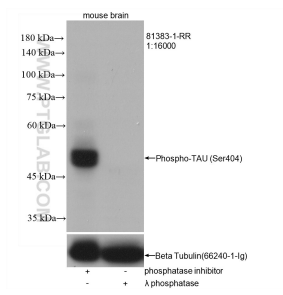
For technical support and original validation data for this product please contact:

T: 1 (888) 4PTGLAB (1-888-478-4522) (toll free
in USA), or 1(312) 455-8498 (outside USA)

E: proteintech@ptglab.com
W: ptglab.com

This product is exclusively available under Proteintech Group brand and is not available to purchase from any other manufacturer.

Ausgewählte Validierungsdaten



Phosphatase inhibitor treated and λ phosphatase treated mouse brain tissue were subjected to SDS PAGE followed by western blot with 81383-1-RR (Phospho-TAU (Ser404) antibody) at dilution of 1:16000 incubated at room temperature for 1 hours. The membrane was stripped and re-blotted with Beta Tubulin antibody as loading control.