

Nur für Forschungszwecke

Phospho-SMAD1 (Ser214) Rekombinanter Antikörper



Katalog-Nr.:81433-1-RR

Allgemeine Informationen

Katalog-Nr.: 81433-1-RR	GenBank-Zugangsnummer: BC001878	Reinigungsmethode: Protein-A-Reinigung
Größe: 100ul , Konzentration: 800 µg/ml von Nanodrop;	GeneID (NCBI): 4086	CloneNo.: 3K8
Wirt: Kaninchen	Vollständiger Name: SMAD family member 1	Empfohlene Verdünnungen: WB 1:2000-1:16800
Isotyp: IgG	Berechnete Masse: 52 kDa	
	Beobachtete Masse: 52 kDa	

Anwendungen

Geprüfte Anwendungen: WB, ELISA	Positivkontrollen: WB : mit UV behandelte A431-Zellen, mit Calyculin A behandelte HepG2-Zellen, Mit UV behandelte NIH/3T3-Zellen
Getestete Reaktivität: Human, Maus	

Hintergrundinformationen

SMAD family member 1 (Smad1) have been involved in metastatic progression of many cancer types. Smad1 can be induced by many tumor-stimulating cytokines such as the bone morphogenetic protein 2 (BMP2) and TNF α and plays important roles in cell invasion and metastasis. BMP2 signalling is initiated by binding to its specific receptors, which leads to in the phosphorylation and nuclear translocation of Smad1. Translocated Smad1 then modulates the expression of downstream osteogenic genes. (PMID: 32954678, PMID: 30008908)

Lagerung

Lagerungsbedingungen:
Bei -20°C lagern. Nach dem Versand ein Jahr lang stabil
Lagerungspuffer:
PBS mit 0.02% Natriumazid und 50% Glycerin pH 7.3.
Aliquotieren ist nicht notwendig bei -20°C Lagerung

*** 20ul-Größen enthalten 0.1% BSA

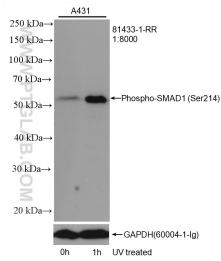
For technical support and original validation data for this product please contact:

T: 1 (888) 4PTGLAB (1-888-478-4522) (toll free
in USA), or 1(312) 455-8498 (outside USA)

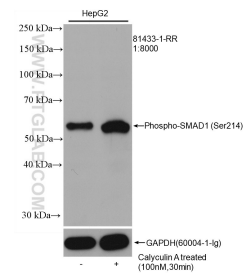
E: proteintech@ptglab.com
W: ptglab.com

This product is exclusively available under Proteintech Group brand and is not available to purchase from any other manufacturer.

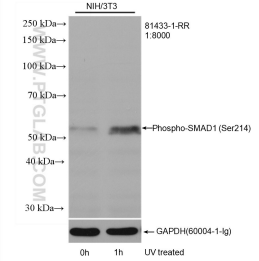
Ausgewählte Validierungsdaten



Non-treated and UV treated A431 cells were subjected to SDS PAGE followed by western blot with 81433-1-RR (Phospho-SMAD1 (Ser214) antibody) at dilution of 1:8000 incubated at room temperature for 1.5 hours. The membrane was stripped and re-blotted with GAPDH antibody as loading control.



Non-treated and Calyculin A treated HepG2 cells were subjected to SDS PAGE followed by western blot with 81433-1-RR (Phospho-SMAD1 (Ser214) antibody) at dilution of 1:8000 incubated at room temperature for 1.5 hours. The membrane was stripped and re-blotted with GAPDH antibody as loading control.



Non-treated and UV treated NIH/3T3 cells were subjected to SDS PAGE followed by western blot with 81433-1-RR (Phospho-SMAD1 (Ser214) antibody) at dilution of 1:8000 incubated at room temperature for 1.5 hours. The membrane was stripped and re-blotted with GAPDH antibody as loading control.