

Nur für Forschungszwecke

GLUT1 Rekombinanter Antikörper

Katalog-Nr.:81463-1-RR



Allgemeine Informationen

Katalog-Nr.: 81463-1-RR	GenBank-Zugangsnummer: BC121804	Reinigungsmethode: Protein-A-Reinigung
Größe: 100ul , Konzentration: 1000 µg/ml von6513 Nanodrop;	GeneID (NCBI): 6F14	CloneNo.: 6F14
Wirt: Kaninchen	Vollständiger Name: solute carrier family 2 (facilitated glucose transporter), member 1	Empfohlene Verdünnungen: WB 1:5000-1:50000
Isotyp: IgG	Berechnete Masse: 492 aa, 54 kDa	
Immunogen Katalognummer: AG16282	Beobachtete Masse: 45-55 kDa	

Anwendungen

Geprüfte Anwendungen: WB, ELISA	Positivkontrollen: WB : ungekochte HEK-293-Zellen, HeLa cells (incubated at 37°C)
Getestete Reaktivität: Human	

Hintergrundinformationen

GLUT1, also known as SLC2A1, is a ubiquitously expressed glucose transporter and is responsible for the basal level of glucose uptake in most cell types. Human erythrocytes express the highest level of GLUT1. Defects in SLC2A1 are the cause of GLUT1 deficiency syndrome type 1 and type 2. High expression of GLUT1 has been reported to be a reliable immunohistochemical marker for juvenile hemangiomas. GLUT1 protein may appear as two or more distinct forms among 43 kDa to 55 kDa due to the different glycosylation states. And the conversion of the highly glycosylated form of GLUT1 to a less glycosylated form has been reported to correlate with differentiation (PMID: 8263524, 23302780).

Lagerung

Lagerungsbedingungen:
Bei -20°C lagern. Nach dem Versand ein Jahr lang stabil
Lagerungspuffer:
PBS mit 0.02% Natriumazid und 50% Glycerin pH 7.3.
Aliquotieren ist nicht notwendig bei -20°C Lagerung

***** 20ul-Größen enthalten 0.1% BSA**

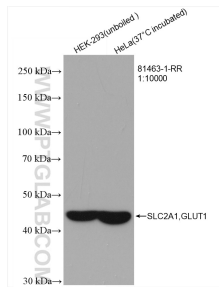
For technical support and original validation data for this product please contact:

T: 1 (888) 4PTGLAB (1-888-478-4522) (toll free
in USA), or 1(312) 455-8498 (outside USA)

E: proteintech@ptglab.com
W: ptglab.com

This product is exclusively available under Proteintech Group brand and is not available to purchase from any other manufacturer.

Ausgewählte Validierungsdaten



Various lysates were subjected to SDS PAGE followed by western blot with 81463-1-RR (SLC2A1, GLUT1 antibody) at dilution of 1:10000 incubated at room temperature for 1.5 hours.