

Nur für Forschungszwecke

Phospho-RPS6KA1 (Thr359/Ser363) Rekombinanter Antikörper



Katalog-Nr.: 81475-1-RR

Allgemeine Informationen

Katalog-Nr.: 81475-1-RR	GenBank-Zugangsnummer: BC014966	Reinigungsmethode: Protein-A-Reinigung
Größe: 100ul, Konzentration: 500 µg/ml von Nanodrop;	GeneID (NCBI): 6195	CloneNo.: 3O10
Wirt: Kaninchen	Vollständiger Name: ribosomal protein S6 kinase, 90kDa, polypeptide 1	Empfohlene Verdünnungen: WB 1:5000-1:50000
Isotyp: IgG	Berechnete Masse: 735 aa, 83 kDa	
	Beobachtete Masse: 83-90 kDa	

Anwendungen

Geprüfte Anwendungen: WB, ELISA	Positivkontrollen: WB : HeLa-Zellen, Mit λ-Phosphatase behandelte HeLa-Zellen
Getestete Reaktivität: Human, Maus	

Hintergrundinformationen

The 90 kDa ribosomal S6 kinases (RSK1-4) are a family of widely expressed serine/threonine kinases and play an important role in the MAPK signaling cascade and act downstream of ERK1/2 signaling. It can mediate mitogenic and stress-induced activation of the transcription factors CREB1, ETV1/ER81 and NR4A1/NUR77. RSK1 (RPS6KA1) is also designated as p90RSK associated with cellular proliferation, survival and differentiation. RPS6KA1 has some phosphorylation sites including Ser380, Thr359 and Ser363 which are important for kinase activation. (PMID: 16458888, 30813401, 17259979, 10679322)

Lagerung

Lagerungsbedingungen:
Bei -20°C lagern. Nach dem Versand ein Jahr lang stabil
Lagerungspuffer:
PBS mit 0.02% Natriumazid und 50% Glycerin pH 7.3.
Aliquotieren ist nicht notwendig bei -20°C Lagerung

*** 20ul-Größen enthalten 0.1% BSA

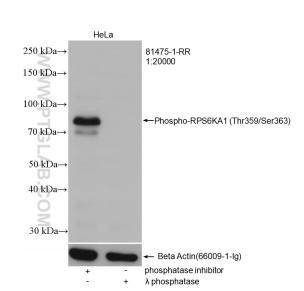
For technical support and original validation data for this product please contact:

T: 1 (888) 4PTGLAB (1-888-478-4522) (toll free
in USA), or 1(312) 455-8498 (outside USA)

E: proteintech@ptglab.com
W: ptglab.com

This product is exclusively available under Proteintech Group brand and is not available to purchase from any other manufacturer.

Ausgewählte Validierungsdaten



Non-treated and λ phosphatase treated HeLa cells were subjected to SDS PAGE followed by western blot with 81475-1-RR (Phospho-RPS6KA1 (Thr359/Ser363) antibody) at dilution of 1:20000 incubated at room temperature for 1.5 hours. The membrane was stripped and re-blotted with Beta-Tubulin (66009-1-Ig) as loading control.