

Nur für Forschungszwecke

# PSAT1 Rekombinanter Antikörper

Katalog-Nr.:81479-1-RR



## Allgemeine Informationen

|                                                                    |                                                                |                                                      |
|--------------------------------------------------------------------|----------------------------------------------------------------|------------------------------------------------------|
| <b>Katalog-Nr.:</b><br>81479-1-RR                                  | <b>GenBank-Zugangsnummer:</b><br>BC004863                      | <b>Reinigungsmethode:</b><br>Protein-A-Reinigung     |
| <b>Größe:</b><br>100ul , Konzentration: 400 µg/ml von<br>Nanodrop; | <b>GeneID (NCBI):</b><br>29968                                 | <b>CloneNo.:</b><br>1O22                             |
| <b>Wirt:</b><br>Kaninchen                                          | <b>Vollständiger Name:</b><br>phosphoserine aminotransferase 1 | <b>Empfohlene Verdünnungen:</b><br>WB 1:5000-1:50000 |
| <b>Isotyp:</b><br>IgG                                              | <b>Berechnete Masse:</b><br>40 kDa                             |                                                      |
| <b>Immunogen Katalognummer:</b><br>AG0776                          | <b>Beobachtete Masse:</b><br>37-40 kDa                         |                                                      |

## Anwendungen

**Geprüfte Anwendungen:**  
WB, ELISA

**Getestete Reaktivität:**  
Hausschwein, Human, Maus

**Positivkontrollen:**

WB : HepG2-Zellen, Hausschwein-Hirngewebe, K-562-Zellen, NIH/3T3-Zellen

## Hintergrundinformationen

PSAT1, also named as PSA and PSAT, belongs to the class-V pyridoxal-phosphate-dependent aminotransferase family and SerC subfamily. It catalyzes the reversible conversion of 3-phosphohydroxypyruvate to phosphoserine and of 3-hydroxy-2-oxo-4-phosphonooxybutanoate to phosphohydroxythreonine. PSAT1 represents a new interesting target for CRC therapy. It may be implicated in altered serine metabolism and schizophrenia spectrum conditions. (PMID: 18221502, 20955740)

## Lagerung

**Lagerungsbedingungen:**

Bei -20°C lagern. Nach dem Versand ein Jahr lang stabil

**Lagerungspuffer:**

PBS mit 0.02% Natriumazid und 50% Glycerin pH 7.3.

Aliquotieren ist nicht notwendig bei -20°C Lagerung

\*\*\* 20ul-Größen enthalten 0.1% BSA

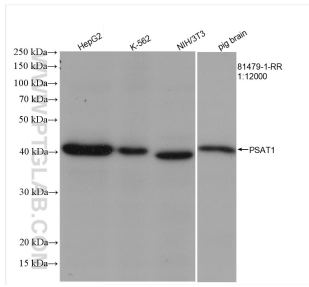
For technical support and original validation data for this product please contact:

T: 1 (888) 4PTGLAB (1-888-478-4522) (toll free  
in USA), or 1(312) 455-8498 (outside USA)

E: proteintech@ptglab.com  
W: ptglab.com

This product is exclusively available under Proteintech Group brand and is not available to purchase from any other manufacturer.

## Ausgewählte Validierungsdaten



Various lysates were subjected to SDS PAGE followed by western blot with 81479-1-RR (PSAT1 antibody) at dilution of 1:12000 incubated at room temperature for 1.5 hours.