

Nur für Forschungszwecke

Phospho-PDH E1 Alpha (Ser232) Rekombinanter Antikörper



Katalog-Nr.: 81491-1-RR

Allgemeine Informationen

Katalog-Nr.: 81491-1-RR	GenBank-Zugangsnummer: BC002406	Reinigungsmethode: Protein-A-Reinigung
Größe: 100ul, Konzentration: 500 µg/ml von Nanodrop;	GeneID (NCBI): 5160	CloneNo.: 1L22
Wirt: Kaninchen	Vollständiger Name: pyruvate dehydrogenase (lipoamide) alpha 1	Empfohlene Verdünnungen: WB 1:5000-1:50000
Isotyp: IgG	Berechnete Masse: 43 kDa	
	Beobachtete Masse: 40 kDa	

Anwendungen

Geprüfte Anwendungen:
WB, ELISA

Getestete Reaktivität:
Human

Positivkontrollen:

WB : HEK-293T-Zellen, λ phosphatase HEK-293T cells

Hintergrundinformationen

PDH E1 Alpha (PDHA1), as the major component of PDH, can be phosphorylated and inactivated by PDHK1. PDHA1 contains three serine residues (Ser232, Ser293, or Ser300) that can be reversibly phosphorylated by a dedicated family of four inhibitory pyruvate dehydrogenase kinases (PDHK1-4) and two reactivating phosphatases (PDP1, 2). Hypoxia induces the expression of PDHK1 and PDHK3 and hyperphosphorylates PDHA1. Phosphorylated PDHA1 inactivates the whole pyruvate dehydrogenase complex (PDC), reduces pyruvate entering into the tricarboxylic acid (TCA) cycle for oxidative phosphorylation, enhances the Warburg effect and promotes tumorigenesis. (PMID: 30993888, PMID: 34749809)

Lagerung

Lagerungsbedingungen:
Bei -20°C lagern. Nach dem Versand ein Jahr lang stabil

Lagerungspuffer:
PBS mit 0.02% Natriumazid und 50% Glycerin pH 7.3.

Aliquotieren ist nicht notwendig bei -20°C Lagerung

*** 20ul-Größen enthalten 0.1% BSA

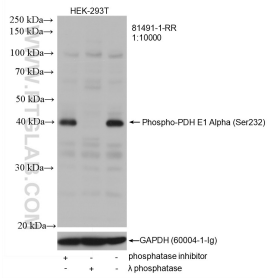
For technical support and original validation data for this product please contact:

T: 1 (888) 4PTGLAB (1-888-478-4522) (toll free
in USA), or 1(312) 455-8498 (outside USA)

E: proteintech@ptglab.com
W: ptglab.com

This product is exclusively available under Proteintech Group brand and is not available to purchase from any other manufacturer.

Ausgewählte Validierungsdaten



Non-treated HEK-293T cells, phosphatase inhibitor treated and λ phosphatase HEK-293T cells were subjected to SDS PAGE followed by western blot with 81491-1-RR (Phospho-PDH E1 Alpha (Ser232) antibody) at dilution of 1:10000 incubated at room temperature for 1.5 hours. The membrane was stripped and re-blotted with GAPDH antibody as loading control.