

Allgemeine Informationen

Katalog-Nr.: 81504-1-RR	GenBank-Zugangsnummer: BC015641	Reinigungsmethode: Protein-A-Reinigung
Größe: 100ul , Konzentration: 500 µg/ml von Nanodrop;	GeneID (NCBI): 2023	CloneNo.: 6E24
Wirt: Kaninchen	Vollständiger Name: enolase 1, (alpha)	Empfohlene Verdünnungen: WB 1:5000-1:50000 IHC 1:500-1:2000 IF 1:50-1:500
Isotyp: IgG	Berechnete Masse: 47 kDa	
Immunogen Katalognummer: AG1692	Beobachtete Masse: 47 kDa	

Anwendungen

Geprüfte Anwendungen:

IF, IHC, WB, ELISA

Getestete Reaktivität:

Hausschwein, Human, Maus, Ratte

Hinweis-IHC: Antigendemaskierung mit TE-Puffer pH 9,0 empfohlen. (*) Wahlweise kann die Antigendemaskierung auch mit Citratpuffer pH 6,0 erfolgen.

Positivkontrollen:

WB : HEK-293-Zellen, Hausschwein-Hirngewebe, HeLa-Zellen, HepG2-Zellen, Jurkat-Zellen, Maushirngewebe, MCF-7-Zellen, PC-3-Zellen, Rattenhirngewebe

IHC : Maushirngewebe, humanes Kolonkarzinomgewebe

IF : HepG2-Zellen,

Hintergrundinformationen

Enolase (ENO), also known as 2-phospho-D-glycerate hydrolase, is a metalloenzyme that catalyzes the dehydration of 2-phospho-D-glycerate into phosphoenolpyruvate in the glycolytic pathway. There are three different ENO isoforms in higher eukaryotes, including ENO1 or α -ENO, ENO2 or γ -ENO, and ENO3 or β -ENO. Furthermore, the expression of the different ENO isoforms is tissue specificity. ENO1 is expressed in almost all kinds of tissue, whereas ENO3 is restricted to muscle tissues and ENO2 is described as a neuron- and neuroendocrine tissue-specific enolase. ENO1 serves multifunctional roles in physiological and pathological processes. (PMID: 32256815). This antibody can recognize ENO1, ENO2, and ENO3.

Lagerung

Lagerungsbedingungen:

Bei -20°C lagern. Nach dem Versand ein Jahr lang stabil

Lagerungspuffer:

PBS mit 0.02% Natriumazid und 50% Glycerin pH 7.3.

Aliquotieren ist nicht notwendig bei -20°C Lagerung

***** 20ul-Größen enthalten 0.1% BSA**

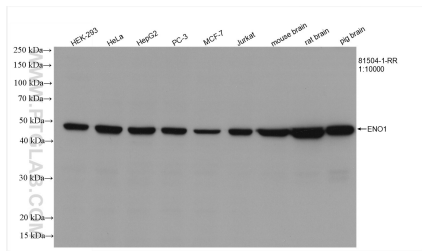
For technical support and original validation data for this product please contact:

T: 1 (888) 4PTGLAB (1-888-478-4522) (toll free in USA), or 1(312) 455-8498 (outside USA)

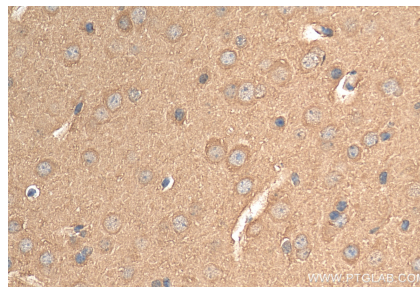
E: proteintech@ptglab.com
W: ptglab.com

This product is exclusively available under Proteintech Group brand and is not available to purchase from any other manufacturer.

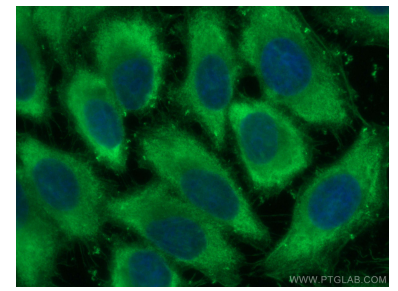
Ausgewählte Validierungsdaten



Various lysates were subjected to SDS PAGE followed by western blot with 81504-1-RR (ENO1/2/3 antibody) at dilution of 1:10000 incubated at room temperature for 1.5 hours.



Immunohistochemical analysis of paraffin-embedded mouse brain tissue slide using 81504-1-RR (ENO1/2/3 antibody) at dilution of 1:1000 (under 40x lens). Heat mediated antigen retrieval with Tris-EDTA buffer (pH 9.0).



Immunofluorescent analysis of (-20°C Ethanol) fixed HepG2 cells using ENO1/2/3 antibody (81504-1-RR, Clone: 6E24) at dilution of 1:200 and CoraLite®488-Conjugated AffiniPure Goat Anti-Rabbit IgG(H+L).