

## Allgemeine Informationen

<b>Katalog-Nr.:</b> 81527-1-RR	<b>GenBank-Zugangsnummer:</b> BC050715	<b>Reinigungsmethode:</b> Protein-A-Reinigung
<b>Größe:</b> 100ul , Konzentration: 250 µg/ml von Nanodrop;	<b>GeneID (NCBI):</b> 373156	<b>CloneNo.:</b> 3J1
<b>Wirt:</b> Kaninchen	<b>Vollständiger Name:</b> glutathione S-transferase kappa 1	<b>Empfohlene Verdünnungen:</b> WB 1:5000-1:50000 IHC 1:50-1:500 IF 1:250-1:1000
<b>Isotyp:</b> IgG	<b>Berechnete Masse:</b> 32 kDa	
<b>Immunogen Katalognummer:</b> AG6036	<b>Beobachtete Masse:</b> 27 kDa	

## Anwendungen

### Geprüfte Anwendungen:

IF, IHC, WB, ELISA

### Getestete Reaktivität:

Human, Maus, Ratte

**Hinweis-IHC: Antigendemaskierung mit TE-Puffer pH 9,0 empfohlen. (\*) Wahlweise kann die Antigendemaskierung auch mit Citratpuffer pH 6,0 erfolgen.**

### Positivkontrollen:

WB : HEK-293-Zellen, Daudi-Zellen, HeLa-Zellen, HepG2-Zellen, L02-Zellen, Raji-Zellen

IHC : humanes Leberkarzinomgewebe, Maushodengewebe

IF : HeLa-Zellen,

## Hintergrundinformationen

GSTK1, glutathione S-transferase kappa 1, belongs to the superfamily of glutathione S-transferase (GST), which is related to oxidative stress (PMID:16081649). GSTK1 expression is negatively correlated with obesity and hypertrophic cardiomyopathy (PMID:21428694, PMID:27378925). GSTK1 was expressed in the peroxisomal and mitochondrial fractions and localized to peroxisomes (PubMed:14742434).

## Lagerung

### Lagerungsbedingungen:

Bei -20°C lagern. Nach dem Versand ein Jahr lang stabil

### Lagerungspuffer:

PBS mit 0.02% Natriumazid und 50% Glycerin pH 7.3.

Aliquotieren ist nicht notwendig bei -20°C Lagerung

\*\*\* 20ul-Größen enthalten 0.1% BSA

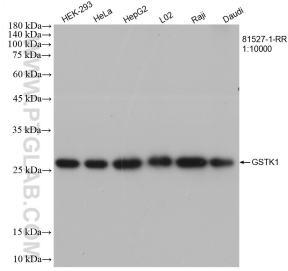
For technical support and original validation data for this product please contact:

T: 1 (888) 4PTGLAB (1-888-478-4522) (toll free in USA), or 1(312) 455-8498 (outside USA)

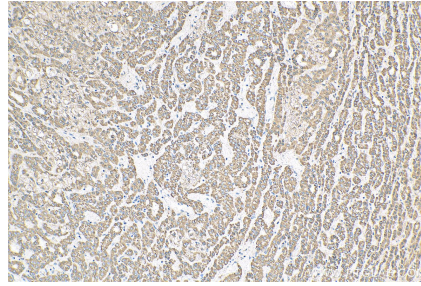
E: proteintech@ptglab.com  
W: ptglab.com

This product is exclusively available under Proteintech Group brand and is not available to purchase from any other manufacturer.

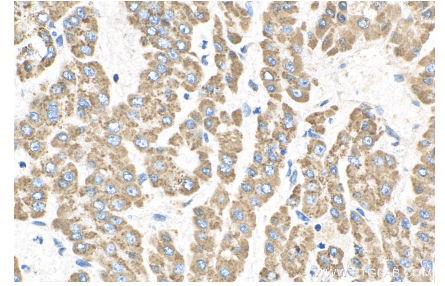
## Ausgewählte Validierungsdaten



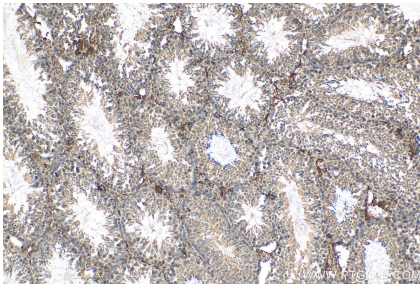
Various lysates were subjected to SDS PAGE followed by western blot with 81527-1-RR (GSTK1 antibody) at dilution of 1:10000 incubated at room temperature for 1.5 hours.



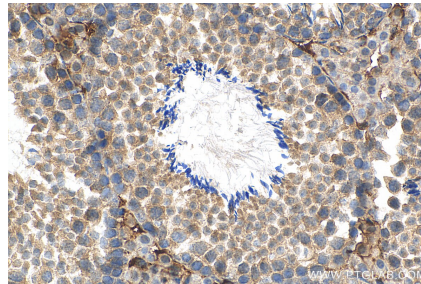
Immunohistochemical analysis of paraffin-embedded human liver cancer tissue slide using 81527-1-RR (GSTK1 antibody) at dilution of 1:200 (under 10x lens). Heat mediated antigen retrieval with Tris-EDTA buffer (pH 9.0).



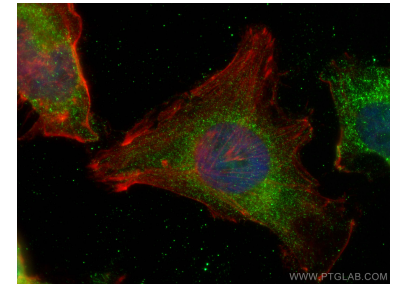
Immunohistochemical analysis of paraffin-embedded human liver cancer tissue slide using 81527-1-RR (GSTK1 antibody) at dilution of 1:200 (under 40x lens). Heat mediated antigen retrieval with Tris-EDTA buffer (pH 9.0).



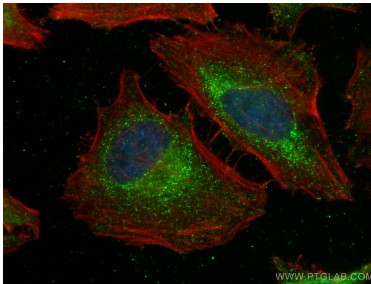
Immunohistochemical analysis of paraffin-embedded mouse testis tissue slide using 81527-1-RR (GSTK1 antibody) at dilution of 1:200 (under 10x lens). Heat mediated antigen retrieval with Tris-EDTA buffer (pH 9.0).



Immunohistochemical analysis of paraffin-embedded mouse testis tissue slide using 81527-1-RR (GSTK1 antibody) at dilution of 1:200 (under 40x lens). Heat mediated antigen retrieval with Tris-EDTA buffer (pH 9.0).



Immunofluorescent analysis of (4% PFA) fixed HeLa cells using GSTK1 antibody (81527-1-RR, Clone: 3J1) at dilution of 1:500 and CoraLite@488-Conjugated AffiniPure Goat Anti-Rabbit IgG(H+L), CL594-Phalloidin (red).



Immunofluorescent analysis of (4% PFA) fixed HeLa cells using GSTK1 antibody (81527-1-RR, Clone: 3J1) at dilution of 1:500 and CoraLite@488-Conjugated AffiniPure Goat Anti-Rabbit IgG(H+L), CL594-Phalloidin (red).