

Nur für Forschungszwecke

DRP1 (C-terminal) Rekombinanter Antikörper

Katalog-Nr.:81561-1-RR



Allgemeine Informationen

Katalog-Nr.: 81561-1-RR	GenBank-Zugangsnummer: BC024590	Reinigungsmethode: Protein-A-Reinigung
Größe: 100ul , Konzentration: 1000 µg/ml von10059	GeneID (NCBI): 10059	CloneNo.: 2A19
Nanodrop;	Vollständiger Name: dynamin 1-like	Empfohlene Verdünnungen: WB 1:5000-1:50000 IF 1:200-1:800
Wirt: Kaninchen	Berechnete Masse: 710 aa, 79 kDa	
Isotyp: IgG	Beobachtete Masse: 70-80 kDa	
Immunogen Katalognummer: AG3644		

Anwendungen

Geprüfte Anwendungen: IF, WB, ELISA	Positivkontrollen:
Getestete Reaktivität: Human, Maus, Ratte	WB : HeLa-Zellen, A549-Zellen, HCT 116-Zellen, Maushirngewebe, NIH/3T3-Zellen, PC-12-Zellen, Rattenhirngewebe
	IF : NIH/3T3-Zellen,

Hintergrundinformationen

DNM1L(Dynamin-1-like protein) , also known as dynamin-related protein 1 (DRP1), belongs to the dynamin family of large GTPases that mediate membrane remodeling during a variety of cellular processes. DNM1L has an important role in the division of growing mitochondria and peroxisomes and also mediates outer mitochondrial membrane fission in mammalian cells. DNM1L is ubiquitously expressed with abundant expression in skeletal muscle, heart, kidney and brain.Variable isoforms of DNM1L have been reported in a tissue-specific manner due to the alternative splicing.

Lagerung

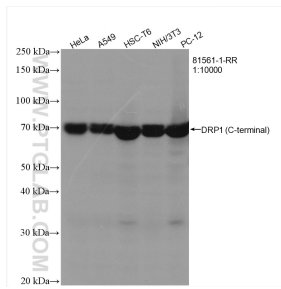
Lagerungsbedingungen:
Bei -20°C lagern. Nach dem Versand ein Jahr lang stabil
Lagerungspuffer:
PBS mit 0.02% Natriumazid und 50% Glycerin pH 7.3.
Aliquotieren ist nicht notwendig bei -20°C Lagerung

***** 20ul-Größen enthalten 0.1% BSA**

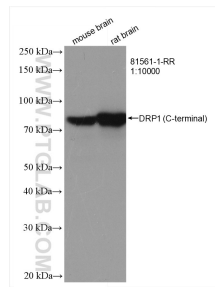
For technical support and original validation data for this product please contact:
T: 1 (888) 4PTGLAB (1-888-478-4522) (toll free in USA), or 1(312) 455-8498 (outside USA)
E: proteintech@ptglab.com
W: ptglab.com

This product is exclusively available under Proteintech Group brand and is not available to purchase from any other manufacturer.

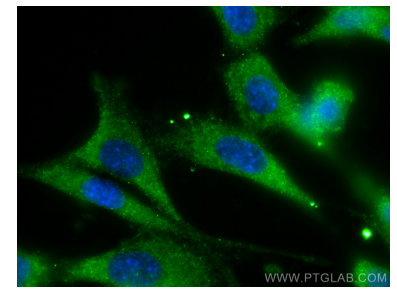
Ausgewählte Validierungsdaten



Various lysates were subjected to SDS PAGE followed by western blot with 81561-1-RR (DRP1 (C-terminal) antibody) at dilution of 1:10000 incubated at room temperature for 1.5 hours.



Various lysates were subjected to SDS PAGE followed by western blot with 81561-1-RR (DRP1 (C-terminal) antibody) at dilution of 1:10000 incubated at room temperature for 1.5 hours.



Immunofluorescent analysis of (-20°C Methanol) fixed NIH/3T3 cells using DRP1 (C-terminal) antibody (81561-1-RR, Clone: 2A19) at dilution of 1:400 and CoraLite®488-Conjugated AffiniPure Goat Anti-Rabbit IgG(H+L).