

Allgemeine Informationen

Katalog-Nr.: 81611-1-RR	GenBank-Zugangsnummer: BC008906	Reinigungsmethode: Protein-A-Reinigung
Größe: 100ul , Konzentration: 1000 µg/ml von1892 Nanodrop;	GeneID (NCBI): 1892	CloneNo.: 5G5
Wirt: Kaninchen	Vollständiger Name: enoyl Coenzyme A hydratase, short chain, 1, mitochondrial	Empfohlene Verdünnungen: WB 1:5000-1:50000 IHC 1:500-1:2000
Isotyp: IgG	Berechnete Masse: 31 kDa	
Immunogen Katalognummer: AG1842	Beobachtete Masse: 30 kDa	

Anwendungen

Geprüfte Anwendungen:

IHC, WB, ELISA

Getestete Reaktivität:

Human, Maus, Ratte

Hinweis-IHC: Antigendemaskierung mit TE-Puffer pH 9,0 empfohlen. (*) Wahlweise kann die Antigendemaskierung auch mit Citratpuffer pH 6,0 erfolgen.

Positivkontrollen:

WB : HeLa-Zellen, Caco-2-Zellen, HEK-293-Zellen, HepG2-Zellen, L02-Zellen, Mauslebergewebe, MCF-7-Zellen, PC-3-Zellen, Rattenlebergewebe

IHC : humanes Prostatakarzinomgewebe,

Hintergrundinformationen

Enoyl-coenzyme A hydratase (ECHS1) is a mitochondrial protein which catalyzes the hydration of 2-trans-enoyl-coenzyme A intermediates to L-3-hydroxyacyl-coenzyme A, playing a key role in metabolism of fatty acids in mitochondria. ECHS1 is highly expressed in muscle, liver and fibroblasts. Altered expression of ECHS1 has been considered a characteristic feature of mitochondria dysfunction. (23275097, 23235493)

Lagerung

Lagerungsbedingungen:

Bei -20°C lagern. Nach dem Versand ein Jahr lang stabil

Lagerungspuffer:

PBS mit 0.02% Natriumazid und 50% Glycerin pH 7.3.

Aliquotieren ist nicht notwendig bei -20°C Lagerung

***** 20ul-Größen enthalten 0.1% BSA**

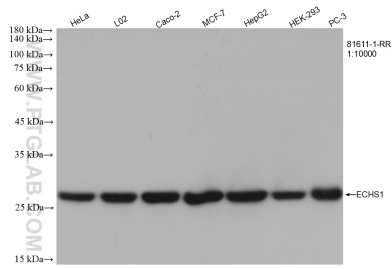
For technical support and original validation data for this product please contact:

T: 1 (888) 4PTGLAB (1-888-478-4522) (toll free in USA), or 1(312) 455-8498 (outside USA)

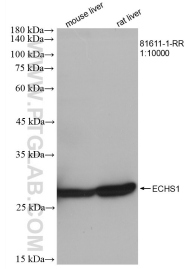
E: proteintech@ptglab.com
W: ptglab.com

This product is exclusively available under Proteintech Group brand and is not available to purchase from any other manufacturer.

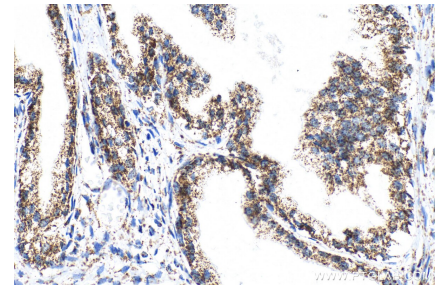
Ausgewählte Validierungsdaten



Various lysates were subjected to SDS PAGE followed by western blot with 81611-1-RR (ECHS1 antibody) at dilution of 1:10000 incubated at room temperature for 1.5 hours.



Various lysates were subjected to SDS PAGE followed by western blot with 81611-1-RR (ECHS1 antibody) at dilution of 1:10000 incubated at room temperature for 1.5 hours.



Immunohistochemical analysis of paraffin-embedded human prostate cancer tissue slide using 81611-1-RR (ECHS1 antibody) at dilution of 1:1000 (under 40x lens). Heat mediated antigen retrieval with Tris-EDTA buffer (pH 9.0).