

Nur für Forschungszwecke

Phospho-CHEK2 (Thr68) Rekombinanter Antikörper



Katalog-Nr.: 81740-1-RR

Allgemeine Informationen

Katalog-Nr.: 81740-1-RR	GenBank-Zugangsnummer: BC004207	Reinigungsmethode: Protein-A-Reinigung
Größe: 100ul, Konzentration: 1000 µg/ml von 11200 Nanodrop;	GeneID (NCBI): 11200	CloneNo.: 1L2
Wirt: Kaninchen	Vollständiger Name: CHK2 checkpoint homolog (S. pombe)	Empfohlene Verdünnungen: WB 1:5000-1:50000
Isotyp: IgG	Berechnete Masse: 61 kDa	
	Beobachtete Masse: 65 kDa	

Anwendungen

Geprüfte Anwendungen: WB, ELISA	Positivkontrollen: WB: Mit MMS behandelte PC-3-Zellen, UV treated HeLa cells
Getestete Reaktivität: Human	

Hintergrundinformationen

Serine/threonine-protein kinase Chk2 (CHEK2) is a serine/threonine kinase which is activated upon DNA damage and is implicated in pathways that govern DNA repair, cell cycle arrest or apoptosis in response to the initial damage. ATM phosphorylates CHEK2 on T68. Phosphorylation on T68 and subsequent full activation of CHEK2 was shown to require priming phosphorylation on adjacent residues by Polo-like kinase 3 (PLK3) and the dualspecificity tyrosine and serine/threoninekinase TTK/hMPS1. Additionally TTK appears to phosphorylate T68. Phosphorylation of T68 promotes the binding of the N-terminal SQ/TQ-rich cluster of one CHEK2 molecule with the FHA domain of another CHEK2 molecule. (PMID: 28553140, PMID: 18004398, PMID: 33322746)

Lagerung

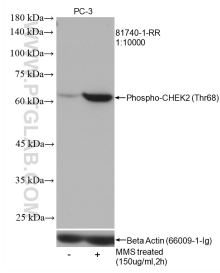
Lagerungsbedingungen:
Bei -20°C lagern. Nach dem Versand ein Jahr lang stabil
Lagerungspuffer:
PBS mit 0.02% Natriumazid und 50% Glycerin pH 7.3.
Aliquotieren ist nicht notwendig bei -20°C Lagerung

***** 20ul-Größen enthalten 0.1% BSA**

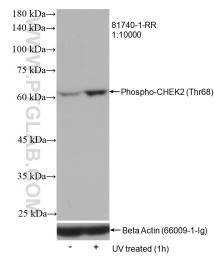
For technical support and original validation data for this product please contact:
T: 1 (888) 4PTGLAB (1-888-478-4522) (toll free in USA), or 1(312) 455-8498 (outside USA)
E: proteintech@ptglab.com
W: ptglab.com

This product is exclusively available under Proteintech Group brand and is not available to purchase from any other manufacturer.

Ausgewählte Validierungsdaten



Non-treated PC-3 and MMS treated PC-3 cells were subjected to SDS PAGE followed by western blot with 81740-1-RR (Phospho-CHEK2 (Thr68) antibody) at dilution of 1:10000 incubated at room temperature for 1.5 hours. The membrane was stripped and re-blotted with Beta Actin antibody as loading control.



Non-treated HeLa and UV treated HeLa cells were subjected to SDS PAGE followed by western blot with 81740-1-RR (Phospho-CHEK2 (Thr68) antibody) at dilution of 1:10000 incubated at room temperature for 1.5 hours. The membrane was stripped and re-blotted with Beta Actin antibody as loading control.