

Nur für Forschungszwecke

PROX1 Rekombinanter Antikörper

Katalog-Nr.:81778-1-RR



Allgemeine Informationen

Katalog-Nr.: 81778-1-RR	GenBank-Zugangsnummer: BC024201	Reinigungsmethode: Protein-A-Reinigung
Größe: 100ul , Konzentration: 500 µg/ml von Nanodrop;	GeneID (NCBI): 5629	CloneNo.: 2H12
Wirt: Kaninchen	Vollständiger Name: prospero homeobox 1	Empfohlene Verdünnungen: WB 1:2000-1:10000
Isotyp: IgG	Berechnete Masse: 737 aa, 83 kDa	
Immunogen Katalognummer: AG1543	Beobachtete Masse: 90 kDa	

Anwendungen

Geprüfte Anwendungen: WB, ELISA	Positivkontrollen: WB : HepG2-Zellen, HuH-7-Zellen, SH-SY5Y-Zellen
Getestete Reaktivität: Human	

Hintergrundinformationen

PROX1, Prospero homeobox protein 1, belongs to the Prospero homeobox family and contain a Prospero-type homeobox DNA-binding domain. PROX1 plays a fundamental role in early development of CNS and regulates the expression of gene and development of postmitotic, undifferentiated neurons. Also, PROX1 is a required regulator of the development of the lymphatic system. This antibody is raised against part of C-terminal chain of human PROX1. The calculated molecular weight of PROX1 is 83 kDa, but with post-translational modifications, PROX1 is about 90 kDa.

Lagerung

Lagerungsbedingungen:
Bei -20°C lagern. Nach dem Versand ein Jahr lang stabil
Lagerungspuffer:
PBS mit 0.02% Natriumazid und 50% Glycerin pH 7.3.
Aliquotieren ist nicht notwendig bei -20°C Lagerung

***** 20ul-Größen enthalten 0.1% BSA**

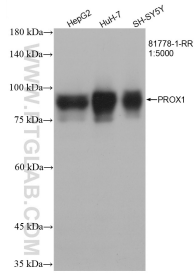
For technical support and original validation data for this product please contact:

T: 1 (888) 4PTGLAB (1-888-478-4522) (toll free
in USA), or 1(312) 455-8498 (outside USA)

E: proteintech@ptglab.com
W: ptglab.com

This product is exclusively available under Proteintech Group brand and is not available to purchase from any other manufacturer.

Ausgewählte Validierungsdaten



Various lysates were subjected to SDS PAGE followed by western blot with 81778-1-RR (PROX1 antibody) at dilution of 1:5000 incubated at room temperature for 1.5 hours.