

Nur für Forschungszwecke

# IGF2BP3 Rekombinanter Antikörper

Katalog-Nr.:81805-1-RR



## Allgemeine Informationen

<b>Katalog-Nr.:</b> 81805-1-RR	<b>GenBank-Zugangsnummer:</b> BC065269	<b>Reinigungsmethode:</b> Protein-A-Reinigung
<b>Größe:</b> 100ul , Konzentration: 1000 µg/ml von10643	<b>GeneID (NCBI):</b> 10643	<b>CloneNo.:</b> 1L11
<b>Nanodrop;</b>	<b>Vollständiger Name:</b> insulin-like growth factor 2 mRNA binding protein 3	<b>Empfohlene Verdünnungen:</b> WB 1:5000-1:50000 IHC 1:200-1:800
<b>Wirt:</b> Kaninchen	<b>Berechnete Masse:</b> 64 kDa	
<b>Isotyp:</b> IgG	<b>Beobachtete Masse:</b> 64 kDa	
<b>Immunogen Katalognummer:</b> AG6226		

## Anwendungen

### Geprüfte Anwendungen:

IHC, WB, ELISA

### Getestete Reaktivität:

Human, Maus, Ratte

**Hinweis-IHC: Antigendemaskierung mit TE-Puffer pH 9,0 empfohlen. (\*) Wahlweise kann die Antigendemaskierung auch mit Citratpuffer pH 6,0 erfolgen.**

### Positivkontrollen:

WB : HEK-293-Zellen, HeLa-Zellen, HepG2-Zellen, K-562-Zellen, Maus-Plazenta-Gewebe, NIH/3T3-Zellen

IHC : humanes Pankreaskarzinomgewebe,

## Hintergrundinformationen

IGF2BP3, also named IMP3, KOC1, and VICKZ3, belongs to the RRM IMP/VICKZ family. It is one of the RNA binding proteins involved in mRNA localization and translational control. IGF2BP3 is expressed during embryogenesis, as well as in some malignant tumors. It can be used as an independent prognostic factor for osteosarcoma. Both isoforms (64kd and 22kd) of IGF2BP3 can be recognized by this antibody. And IGF2BP3 is nuclear and cytoplasm stains.

## Lagerung

### Lagerungsbedingungen:

Bei -20°C lagern. Nach dem Versand ein Jahr lang stabil

### Lagerungspuffer:

PBS mit 0.02% Natriumazid und 50% Glycerin pH 7.3.

Aliquotieren ist nicht notwendig bei -20°C Lagerung

\*\*\* 20ul-Größen enthalten 0.1% BSA

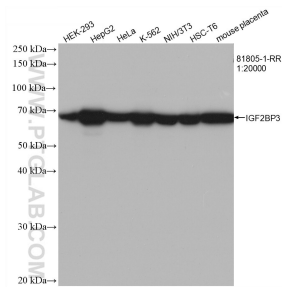
For technical support and original validation data for this product please contact:

T: 1 (888) 4PTGLAB (1-888-478-4522) (toll free in USA), or 1(312) 455-8498 (outside USA)

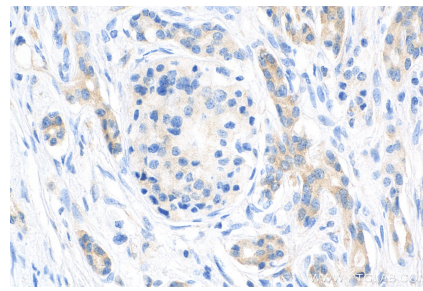
E: proteintech@ptglab.com  
W: ptglab.com

This product is exclusively available under Proteintech Group brand and is not available to purchase from any other manufacturer.

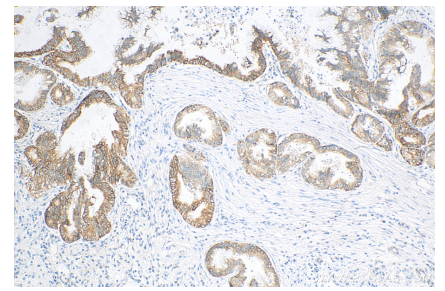
## Ausgewählte Validierungsdaten



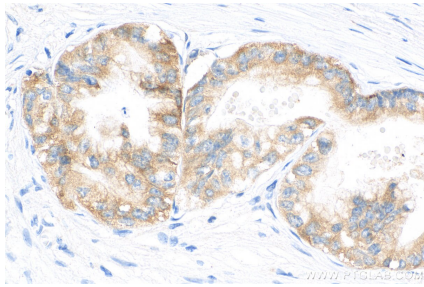
Various lysates were subjected to SDS PAGE followed by western blot with 81805-1-RR (IGF2BP3 antibody) at dilution of 1:20000 incubated at room temperature for 1.5 hours.



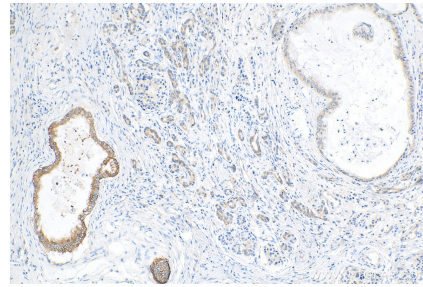
Immunohistochemical analysis of paraffin-embedded human pancreas cancer tissue slide using 81805-1-RR (IGF2BP3 antibody) at dilution of 1:400 (under 40x lens). Heat mediated antigen retrieval with Tris-EDTA buffer (pH 9.0).



Immunohistochemical analysis of paraffin-embedded human pancreas cancer tissue slide using 81805-1-RR (IGF2BP3 antibody) at dilution of 1:400 (under 10x lens). Heat mediated antigen retrieval with Tris-EDTA buffer (pH 9.0).



Immunohistochemical analysis of paraffin-embedded human pancreas cancer tissue slide using 81805-1-RR (IGF2BP3 antibody) at dilution of 1:400 (under 40x lens). Heat mediated antigen retrieval with Tris-EDTA buffer (pH 9.0).



Immunohistochemical analysis of paraffin-embedded human pancreas cancer tissue slide using 81805-1-RR (IGF2BP3 antibody) at dilution of 1:400 (under 0x lens). Heat mediated antigen retrieval with Tris-EDTA buffer (pH 9.0).