

Allgemeine Informationen

Katalog-Nr.: 81857-1-RR	GenBank-Zugangsnummer: BC002899	Reinigungsmethode: Protein-A-Reinigung
Größe: 100ul , Konzentration: 1000 µg/ml von5300 Nanodrop;	GeneID (NCBI): NIMA-interacting 1	CloneNo.: 5N20
Wirt: Kaninchen	Vollständiger Name: peptidylprolyl cis/trans isomerase, NIMA-interacting 1	Empfohlene Verdünnungen: WB 1:5000-1:50000 IHC 1:500-1:2000 IF 1:200-1:800
Isotyp: IgG	Berechnete Masse: 18 kDa	
Immunogen Katalognummer: AG0767	Beobachtete Masse: 18 kDa	

Anwendungen

Geprüfte Anwendungen:

IF, IHC, WB, ELISA

Getestete Reaktivität:

Hausschwein, Human, Maus, Ratte

Hinweis-IHC: Antigenmaskierung mit TE-Puffer pH 9,0 empfohlen. (*) Wahlweise kann die Antigenmaskierung auch mit Citratpuffer pH 6,0 erfolgen.

Positivkontrollen:

WB : HEK-293-Zellen, Hausschwein-Hirngewebe, HeLa-Zellen, Jurkat-Zellen, K-562-Zellen, Maushirngewebe, Rattenhirngewebe

IHC : humanes Pankreaskarzinomgewebe,

IF : NIH/3T3-Zellen,

Hintergrundinformationen

PIN1(Peptidyl-prolyl cis-trans isomerase NIMA-interacting 1) is essential for mitosis progression in yeast cells and is hypothesized to perform the same role in mammalian cells. It might regulate cellular processes distinct from the cell cycle itself, such as terminal differentiation through a modulation of differentiation-specific gene expression(PMID:20801874). It colocalizes with NEK6 in the nucleus. Pin1 inhibition simultaneously blocks multiple cancer pathways, disrupts the desmoplastic and immunosuppressive TME, and upregulates PD-L1 and ENT1, rendering pancreatic ductal adenocarcinoma (PDAC) eradicable by immunochemotherapy (PMID: 34388391).

Lagerung

Lagerungsbedingungen:

Bei -20°C lagern. Nach dem Versand ein Jahr lang stabil

Lagerungspuffer:

PBS mit 0.02% Natriumazid und 50% Glycerin pH 7.3.

Aliquotieren ist nicht notwendig bei -20°C Lagerung

*** 20ul-Größen enthalten 0.1% BSA

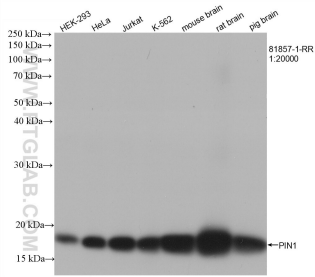
For technical support and original validation data for this product please contact:

T: 1 (888) 4PTGLAB (1-888-478-4522) (toll free in USA), or 1(312) 455-8498 (outside USA)

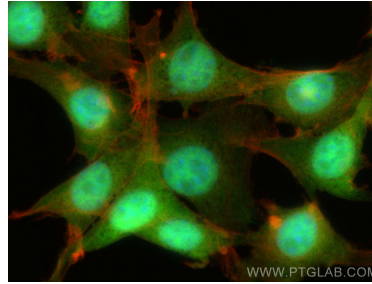
E: proteintech@ptglab.com
W: ptglab.com

This product is exclusively available under Proteintech Group brand and is not available to purchase from any other manufacturer.

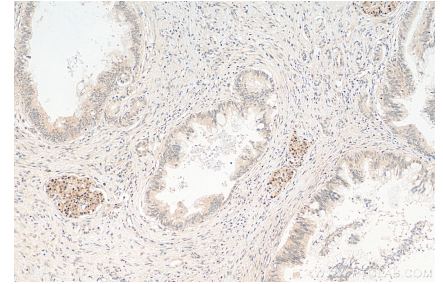
Ausgewählte Validierungsdaten



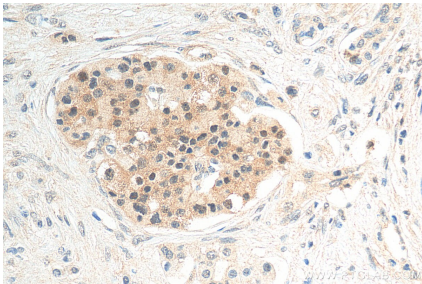
Various lysates were subjected to SDS PAGE followed by western blot with 81857-1-RR (PIN1 antibody) at dilution of 1:20000 incubated at room temperature for 1.5 hours.



Immunofluorescent analysis of (4% PFA) fixed NIH/3T3 cells using PIN1 antibody (81857-1-RR, Clone: 5N20) at dilution of 1:400 and CoraLite®488-Conjugated AffiniPure Goat Anti-Rabbit IgG(H+L), CL594-Phalloidin (red).



Immunohistochemical analysis of paraffin-embedded human pancreas cancer tissue slide using 81857-1-RR (PIN1 antibody) at dilution of 1:1000 (under 10x lens). Heat mediated antigen retrieval with Tris-EDTA buffer (pH 9.0).



Immunohistochemical analysis of paraffin-embedded human pancreas cancer tissue slide using 81857-1-RR (PIN1 antibody) at dilution of 1:1000 (under 40x lens). Heat mediated antigen retrieval with Tris-EDTA buffer (pH 9.0).