

Nur für Forschungszwecke

# Phospho-CREB1 (Ser133) Rekombinanter Antikörper



Katalog-Nr.: 81871-1-RR

## Allgemeine Informationen

<b>Katalog-Nr.:</b> 81871-1-RR	<b>GenBank-Zugangsnummer:</b> BC010636	<b>Reinigungsmethode:</b> Protein-A-Reinigung
<b>Größe:</b> 100ul, Konzentration: 1000 µg/ml von1385	<b>GeneID (NCBI):</b> von1385	<b>CloneNo.:</b> 5H5
<b>Nanodrop;</b>	<b>Vollständiger Name:</b> cAMP responsive element binding protein 1	<b>Empfohlene Verdünnungen:</b> WB 1:5000-1:50000 IHC 1:1000-1:4000
<b>Wirt:</b> Kaninchen	<b>Berechnete Masse:</b> 341 aa, 35 kDa	
<b>Isotyp:</b> IgG	<b>Beobachtete Masse:</b> 35-46 kDa	

## Anwendungen

### Geprüfte Anwendungen:

IHC, WB, ELISA

### Getestete Reaktivität:

Human

**Hinweis-IHC: Antigendemaskierung mit TE-Puffer pH 9,0 empfohlen. (\*) Wahlweise kann die Antigendemaskierung auch mit Citratpuffer pH 6,0 erfolgen.**

### Positivkontrollen:

WB : Mit Calyculin A behandelte HEK-293-Zellen,

IHC : humanes Prostatakarzinomgewebe,

## Hintergrundinformationen

The cAMP-response element binding protein (CREB) is localized in the nucleus and acts as a transcription factor, which binds to the cAMP response element (CRE) of the promoters of its target genes, upon phosphorylation at Ser133 by different receptor-activated protein kinases, such as protein kinase A (PKA), calmodulin-dependent protein kinase (CaMK), mitogen-activated protein kinases (MAPK), and other kinases. The activity of CREB1 in neurons has been correlated with various intracellular processes, including proliferation, differentiation, survival, long-term synaptic potentiation, neurogenesis, and neuronal plasticity. CREB1 belongs to the CREB/activating transcription factor (ATF) family of transcription factors. The antibody also detects the phosphorylated form of the CREB-related protein ATF1. (PMID: 30214393, PMID: 33917483, PMID: 32605164)

## Lagerung

### Lagerungsbedingungen:

Bei -20°C lagern. Nach dem Versand ein Jahr lang stabil

### Lagerungspuffer:

PBS mit 0.02% Natriumazid und 50% Glycerin pH 7.3.

Aliquotieren ist nicht notwendig bei -20°C Lagerung

\*\*\* 20ul-Größen enthalten 0.1% BSA

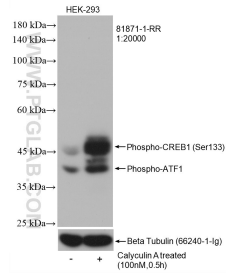
For technical support and original validation data for this product please contact:

T: 1 (888) 4PTGLAB (1-888-478-4522) (toll free in USA), or 1(312) 455-8498 (outside USA)

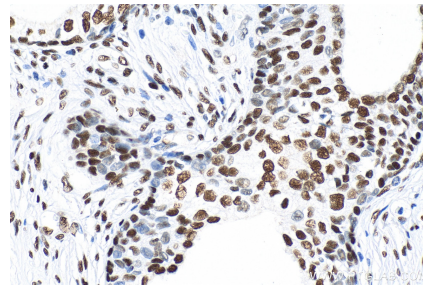
E: proteintech@ptglab.com  
W: ptglab.com

This product is exclusively available under Proteintech Group brand and is not available to purchase from any other manufacturer.

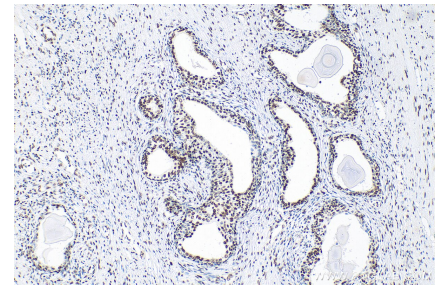
## Ausgewählte Validierungsdaten



Non-treated and Calyculin A treated HEK-293 cells were subjected to SDS PAGE followed by western blot with 81871-1-RR (Phospho-CREB1 (Ser133) antibody) at dilution of 1:20000 incubated at room temperature for 1 hours. The membrane was stripped and re-blotted with Beta-tubulin antibody as loading control.



Immunohistochemical analysis of paraffin-embedded human prostate cancer tissue slide using 81871-1-RR (Phospho-CREB1 (Ser133) antibody) at dilution of 1:2000 (under 40x lens). Heat mediated antigen retrieval with Tris-EDTA buffer (pH 9.0).



Immunohistochemical analysis of paraffin-embedded human prostate cancer tissue slide using 81871-1-RR (Phospho-CREB1 (Ser133) antibody) at dilution of 1:2000 (under 10x lens). Heat mediated antigen retrieval with Tris-EDTA buffer (pH 9.0).