

Nur für Forschungszwecke

# GP73/GOLPH2 Rekombinanter Antikörper

Katalog-Nr.:81893-1-RR



## Allgemeine Informationen

<b>Katalog-Nr.:</b> 81893-1-RR	<b>GenBank-Zugangsnummer:</b> BC001740	<b>Reinigungsmethode:</b> Protein-A-Reinigung
<b>Größe:</b> 100ul , Konzentration: 500 µg/ml von Nanodrop;	<b>GeneID (NCBI):</b> 51280	<b>CloneNo.:</b> 1112
<b>Wirt:</b> Kaninchen	<b>Vollständiger Name:</b> golgi membrane protein 1	<b>Empfohlene Verdünnungen:</b> WB 1:5000-1:50000 IF 1:450-1:1800
<b>Isotyp:</b> IgG	<b>Berechnete Masse:</b> 45 kDa	
<b>Immunogen Katalognummer:</b> AG7207	<b>Beobachtete Masse:</b> 70-75 kDa	

## Anwendungen

<b>Geprüfte Anwendungen:</b> IF, WB, ELISA	<b>Positivkontrollen:</b> WB : HEK-293-Zellen, HeLa-Zellen, MCF-7-Zellen
<b>Getestete Reaktivität:</b> Human	<b>IF :</b> HeLa-Zellen,

## Hintergrundinformationen

Golgi phosphoprotein 2 (GOLPH2, also known as GP73 or GOLM1) is a resident Golgi type-II membrane protein. It is predominantly expressed in the epithelial cells of many human tissues. GOLPH2 traffics through endosomes and can be secreted into the circulation. Its expression is upregulated in a number of tumors and GOLPH2 could be a promising serum marker for hepatocellular carcinoma. We got 70-75 kDa in western blotting due to phosphorylation.

## Lagerung

**Lagerungsbedingungen:**  
Bei -20°C lagern. Nach dem Versand ein Jahr lang stabil  
**Lagerungspuffer:**  
PBS mit 0.02% Natriumazid und 50% Glycerin pH 7.3.  
Aliquotieren ist nicht notwendig bei -20°C Lagerung

\*\*\* 20ul-Größen enthalten 0.1% BSA

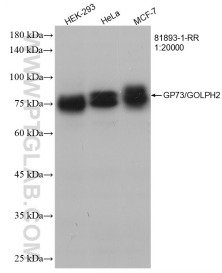
For technical support and original validation data for this product please contact:

T: 1 (888) 4PTGLAB (1-888-478-4522) (toll free in USA), or 1(312) 455-8498 (outside USA)

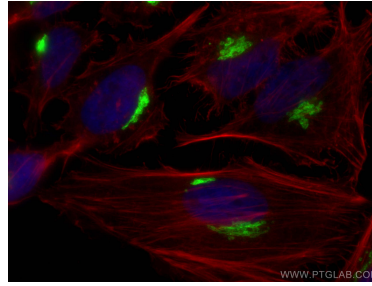
E: proteintech@ptglab.com  
W: ptglab.com

This product is exclusively available under Proteintech Group brand and is not available to purchase from any other manufacturer.

## Ausgewählte Validierungsdaten



Various lysates were subjected to SDS PAGE followed by western blot with 81893-1-RR (GP73/GOLPH2 antibody) at dilution of 1:20000 incubated at room temperature for 1.5 hours.



Immunofluorescent analysis of (4% PFA) fixed HeLa cells using GP73/GOLPH2 antibody (81893-1-RR, Clone: 1112 ) at dilution of 1:900 and CoraLite®488-Conjugated AffiniPure Goat Anti-Rabbit IgG(H+L), CL594-Phalloidin (red).