

Allgemeine Informationen

Katalog-Nr.: 82009-1-RR	GenBank-Zugangsnummer: BC017293	Reinigungsmethode: Protein-A-Reinigung
Größe: 100ul , Konzentration: 1000 µg/ml von4478 Nanodrop;	GeneID (NCBI): moesin	CloneNo.: 3B8
Wirt: Kaninchen	Vollständiger Name: moesin	Empfohlene Verdünnungen: WB 1:5000-1:50000 IHC 1:50-1:500
Isotyp: IgG	Berechnete Masse: 577 aa, 68 kDa	
Immunogen Katalognummer: AG9623	Beobachtete Masse: 68-70 kDa	

Anwendungen

Geprüfte Anwendungen:

IHC, WB, ELISA

Getestete Reaktivität:

Human, Maus, Ratte

Hinweis-IHC: Antigenmaskierung mit TE-Puffer pH 9,0 empfohlen. (*) Wahlweise kann die Antigenmaskierung auch mit Citratpuffer pH 6,0 erfolgen.

Positivkontrollen:

WB : HeLa-Zellen, C6-Zellen, Jurkat-Zellen, RAW 264.7-Zellen, SGC-7901-Zellen

IHC : Mausnierenewebe, humanes Plazenta-Gewebe

Hintergrundinformationen

Moesin belongs to the ezrin-radixin-moesin (ERM) family of proteins which act as cross-linkers between membrane and actin cytoskeleton. ERM proteins provide structural links to strengthen the cell cortex and facilitate several key cellular processes, including membrane dynamics, substrate adhesion, cell survival, cell adhesion, and motility. The function of ERM proteins is highly reliant on phosphorylation induced conformational changes in response to growth factor, chemokine, and antigen stimulation. This antibody may cross-react with ezrin or radixin with molecular weights around 68-70 kDa.

Lagerung

Lagerungsbedingungen:

Bei -20°C lagern. Nach dem Versand ein Jahr lang stabil

Lagerungspuffer:

PBS mit 0.02% Natriumazid und 50% Glycerin pH 7.3.

Aliquotieren ist nicht notwendig bei -20°C Lagerung

*** 20ul-Größen enthalten 0.1% BSA

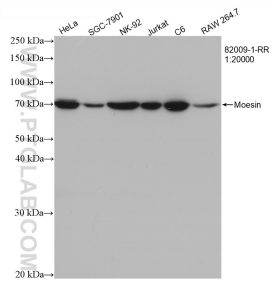
For technical support and original validation data for this product please contact:

T: 1 (888) 4PTGLAB (1-888-478-4522) (toll free in USA), or 1(312) 455-8498 (outside USA)

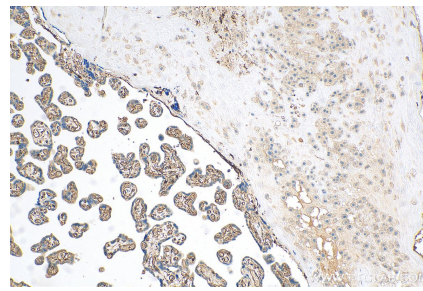
E: proteintech@ptglab.com
W: ptglab.com

This product is exclusively available under Proteintech Group brand and is not available to purchase from any other manufacturer.

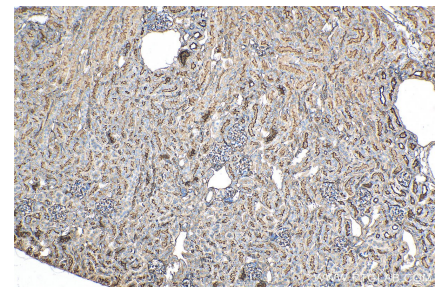
Ausgewählte Validierungsdaten



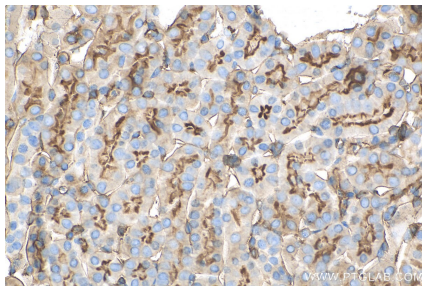
Various lysates were subjected to SDS PAGE followed by western blot with 82009-1-RR (MSN antibody) at dilution of 1:20000 incubated at room temperature for 1.5 hours.



Immunohistochemical analysis of paraffin-embedded human placenta tissue slide using 82009-1-RR (Moesin antibody) at dilution of 1:200 (under 10x lens). Heat mediated antigen retrieval with Tris-EDTA buffer (pH 9.0).



Immunohistochemical analysis of paraffin-embedded mouse kidney tissue slide using 82009-1-RR (Moesin antibody) at dilution of 1:200 (under 10x lens). Heat mediated antigen retrieval with Tris-EDTA buffer (pH 9.0).



Immunohistochemical analysis of paraffin-embedded mouse kidney tissue slide using 82009-1-RR (Moesin antibody) at dilution of 1:200 (under 40x lens). Heat mediated antigen retrieval with Tris-EDTA buffer (pH 9.0).