

Nur für Forschungszwecke

B23/NPM1 Rekombinanter Antikörper

Katalog-Nr.: 82030-1-RR



Allgemeine Informationen

Katalog-Nr.: 82030-1-RR	GenBank-Zugangsnummer: BC002398	Reinigungsmethode: Protein-A-Reinigung
Größe: 100ul, Konzentration: 1000 µg/ml von 4869 Nanodrop;	GeneID (NCBI): nucleophosmin (nucleolar phosphoprotein B23, numatrin)	CloneNo.: 1G4
Wirt: Kaninchen	Vollständiger Name: nucleophosmin (nucleolar phosphoprotein B23, numatrin)	Empfohlene Verdünnungen: WB 1:5000-1:50000 IF 1:500-1:2000
Isotyp: IgG	Berechnete Masse: 33 kDa	
Immunogen Katalognummer: AG0286	Beobachtete Masse: 38 kDa	

Anwendungen

Geprüfte Anwendungen: IF, WB, ELISA	Positivkontrollen: WB : HEK-293-Zellen, HeLa-Zellen, Jurkat-Zellen, THP-1-Zellen IF : HeLa-Zellen,
Getestete Reaktivität: Human	

Hintergrundinformationen

Nucleophosmin (NPM1,B23) is a putative ribosome assembly factor with a high affinity for peptides containing nuclear localization signals (NLSs). The transport of proteins across the nuclear envelope is a selective, multistep process involving several cytoplasmic factors. Proteins must be recognized as import substrates, dock at the nuclear pore complex and translocate across the nuclear envelope in an ATP-dependent fashion. Several cytosolic and nuclear proteins that are central to this process have been identified. The 38 kDa nuclear protein nucleophosmin is involved in ribosomal assembly and rRNA transport. It is an abundant protein that is highly phosphorylated by Cdc2 kinase during mitosis.

Lagerung

Lagerungsbedingungen:
Bei -20°C lagern. Nach dem Versand ein Jahr lang stabil
Lagerungspuffer:
PBS mit 0.02% Natriumazid und 50% Glycerin pH 7.3.
Aliquotieren ist nicht notwendig bei -20°C Lagerung

*** 20ul-Größen enthalten 0.1% BSA

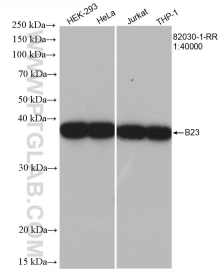
For technical support and original validation data for this product please contact:

T: 1 (888) 4PTGLAB (1-888-478-4522) (toll free in USA), or 1(312) 455-8498 (outside USA)

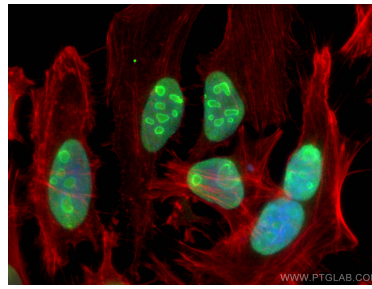
E: proteintech@ptglab.com
W: ptglab.com

This product is exclusively available under Proteintech Group brand and is not available to purchase from any other manufacturer.

Ausgewählte Validierungsdaten



Various lysates were subjected to SDS PAGE followed by western blot with 82030-1-RR (B23 antibody) at dilution of 1:40000 incubated at room temperature for 1.5 hours.



Immunofluorescent analysis of (4% PFA) fixed HeLa cells using B23 antibody (82030-1-RR, Clone: 1G4) at dilution of 1:1000 and CoraLite®488-Conjugated AffiniPure Goat Anti-Rabbit IgG(H+L), CL594-Phalloidin (red).