

Nur für Forschungszwecke

FIS1 Rekombinanter Antikörper

Katalog-Nr.:82248-1-RR



Allgemeine Informationen

Katalog-Nr.: 82248-1-RR	GenBank-Zugangsnummer: BC009428	Reinigungsmethode: Protein-A-Reinigung
Größe: 100ul , Konzentration: 1000 µg/ml von51024 Nanodrop;	GeneID (NCBI): 51024	CloneNo.: 6N15
Wirt: Kaninchen	Vollständiger Name: fission 1 (mitochondrial outer membrane) homolog (S. cerevisiae)	Empfohlene Verdünnungen: WB 1:5000-1:50000 IF 1:500-1:2000
Isotyp: IgG	Berechnete Masse: 17 kDa	
Immunogen Katalognummer: AG1409	Beobachtete Masse: 15 kDa	

Anwendungen

Geprüfte Anwendungen:

IF, WB, ELISA

Getestete Reaktivität:

Human, Maus, Ratte

Positivkontrollen:

WB : LNCaP-Zellen, HEK-293-Zellen, HeLa-Zellen,
HepG2-Zellen, Jurkat-Zellen, NIH/3T3-Zellen

IF : HepG2-Zellen,

Hintergrundinformationen

Fis1 (fission 1) is an integral mitochondrial outer membrane protein that participates in mitochondrial fission by interacting with dynamin-related protein 1 (Drp1). Excessive mitochondrial fission is associated with the pathology of a number of neurodegenerative or neurodevelopmental diseases. Increased expression of Fis1 has been found in Huntington's disease (HD)-affected brain, Alzheimer's disease (AD) patients, and autism spectrum disorder. (PMID: 21257639, 21459773, 23333625)

Lagerung

Lagerungsbedingungen:

Bei -20°C lagern. Nach dem Versand ein Jahr lang stabil

Lagerungspuffer:

PBS mit 0.02% Natriumazid und 50% Glycerin pH 7.3.

Aliquotieren ist nicht notwendig bei -20°C Lagerung

*** 20ul-Größen enthalten 0.1% BSA

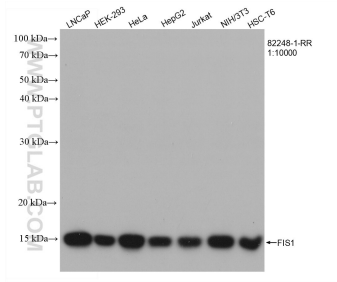
For technical support and original validation data for this product please contact:

T: 1 (888) 4PTGLAB (1-888-478-4522) (toll free
in USA), or 1(312) 455-8498 (outside USA)

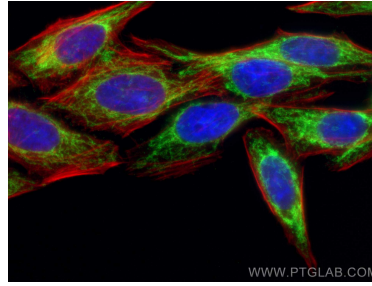
E: proteintech@ptglab.com
W: ptglab.com

This product is exclusively available under Proteintech Group brand and is not available to purchase from any other manufacturer.

Ausgewählte Validierungsdaten



Various lysates were subjected to SDS PAGE followed by western blot with 82248-1-RR (FIS1 antibody) at dilution of 1:10000 incubated at room temperature for 1.5 hours.



Immunofluorescent analysis of (4% PFA) fixed HepG2 cells using FIS1 antibody (82248-1-RR, Clone: 6N15) at dilution of 1:1000 and CoraLite®488-Conjugated AffiniPure Goat Anti-Rabbit IgG(H+L), CL594-Phalloidin (red).