

Allgemeine Informationen

| | | |
|--|---|--|
| Katalog-Nr.: 82278-1-RR | GenBank-Zugangsnummer: BC014969 | Reinigungsmethode: Protein-A-Reinigung |
| Größe: 100ul , Konzentration: 500 µg/ml von Nanodrop; | GeneID (NCBI): 22926 | CloneNo.: 208 |
| Wirt: Kaninchen | Vollständiger Name: activating transcription factor 6 | Empfohlene Verdünnungen: WB 1:2000-1:10000 |
| Isotyp: IgG | Berechnete Masse: 75 kDa | |
| Immunogen Katalognummer: AG21456 | Beobachtete Masse: 90-100 kDa | |

Anwendungen

Geprüfte Anwendungen:
WB, ELISA

Getestete Reaktivität:
Human

Positivkontrollen:

WB : HEK-293-Zellen, HeLa-Zellen, Jurkat-Zellen, K-562-Zellen, MCF-7-Zellen

Hintergrundinformationen

Activating transcription factor 6 (ATF6) is a transcription factor that acts during endoplasmic reticulum stress by activating unfolded protein response target genes. Binds DNA on the 5'-CCAC[GA]-3' half of the ER stress response element (ERSE) (5'-CCAAT-N(9)-CCAC[GA]-3') and of ERSE II (5'-ATTGG-N-CCACG-3'). Binding to ERSE requires binding of NF- γ to ERSE. Could also be involved in activation of transcription by the serum response factor. During unfolded protein response an approximative 50 kDa fragment containing the cytoplasmic transcription factor domain is released by proteolysis. The cleavage seems to be performed sequentially by site-1 and site-2 proteases. The fully glycosylated form of ATF6, a 670 amino acid protein, exhibits an electrophoretic mobility of ~90 kDa in denaturing SDS-gels, in part because of the glycosylated modifications. ATF6 has 3 consensus sites for N-linked glycosylation and exists constitutively as a glycosylated protein. Differentially glycosylated ATF6 forms may result from mutations or experimental treatment (PMID:15804611) (PMID:14699159).

Lagerung

Lagerungsbedingungen:
Bei -20°C lagern. Nach dem Versand ein Jahr lang stabil

Lagerungspuffer:
PBS mit 0.02% Natriumazid und 50% Glycerin pH 7.3.

Aliquotieren ist nicht notwendig bei -20°C Lagerung

*** 20ul-Größen enthalten 0.1% BSA

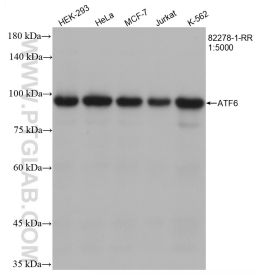
For technical support and original validation data for this product please contact:

T: 1 (888) 4PTGLAB (1-888-478-4522) (toll free
in USA), or 1(312) 455-8498 (outside USA)

E: proteintech@ptglab.com
W: ptglab.com

This product is exclusively available under Proteintech Group brand and is not available to purchase from any other manufacturer.

Ausgewählte Validierungsdaten



Various lysates were subjected to SDS PAGE followed by western blot with 82278-1-RR (ATF6 antibody) at dilution of 1:5000 incubated at room temperature for 1.5 hours.