

Nur für Forschungszwecke

Cytokeratin 20 Rekombinanter Antikörper

Katalog-Nr.: 82428-1-RR



Allgemeine Informationen

| | | |
|---|--|--|
| Katalog-Nr.: 82428-1-RR | GenBank-Zugangsnummer: BC031559 | Reinigungsmethode: Protein-A-Reinigung |
| Größe: 100ul, Konzentration: 1000 µg/ml von 54474 | GeneID (NCBI): 54474 | CloneNo.: 2H10 |
| Nanodrop; | Vollständiger Name: keratin 20 | Empfohlene Verdünnungen: WB 1:5000-1:50000 IHC 1:750-1:3000 |
| Wirt: Kaninchen | Berechnete Masse: 424 aa, 48 kDa | |
| Isotyp: IgG | Beobachtete Masse: 46 kDa | |
| Immunogen Katalognummer: AG11308 | | |

Anwendungen

Geprüfte Anwendungen:

IHC, WB, ELISA

Getestete Reaktivität:

Hausschwein, Human, Maus, Ratte

Hinweis-IHC: Antigendemaskierung mit TE-Puffer pH 9,0 empfohlen. (*) Wahlweise kann die Antigendemaskierung auch mit Citratpuffer pH 6,0 erfolgen.

Positivkontrollen:

WB: HT-29-Zellen, COLO 320-Zellen, Hausschwein-Kolongewebe, Maus-Kolongewebe, Ratten-Kolongewebe

IHC: humanes Appendizitis-Gewebe, humanes Kolonkarzinomgewebe, humanes Urothelkarzinomgewebe

Hintergrundinformationen

Keratins are a large family of proteins that form the intermediate filament cytoskeleton of epithelial cells, which are classified into two major sequence types. Type I keratins are a group of acidic intermediate filament proteins, including K9-K23, and the hair keratins Ha1-Ha8. Type II keratins are the basic or neutral counterparts to the acidic type I keratins, including K1-K8, and the hair keratins, Hb1-Hb6. Keratin 20 is a type I cytokeratin. It is a major cellular protein of mature enterocytes and goblet cells and is specifically found in the gastric and intestinal mucosa.

Lagerung

Lagerungsbedingungen:

Bei -20°C lagern. Nach dem Versand ein Jahr lang stabil

Lagerungspuffer:

PBS mit 0.02% Natriumazid und 50% Glycerin pH 7.3.

Aliquotieren ist nicht notwendig bei -20°C Lagerung

*** 20ul-Größen enthalten 0.1% BSA

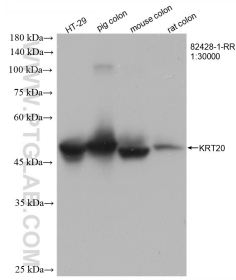
For technical support and original validation data for this product please contact:

T: 1 (888) 4PTGLAB (1-888-478-4522) (toll free in USA), or 1(312) 455-8498 (outside USA)

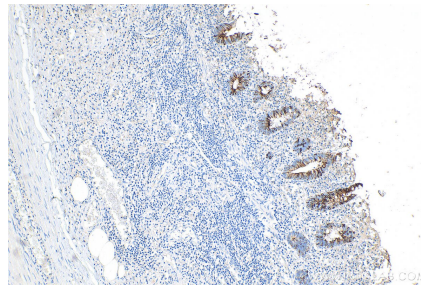
E: proteintech@ptglab.com
W: ptglab.com

This product is exclusively available under Proteintech Group brand and is not available to purchase from any other manufacturer.

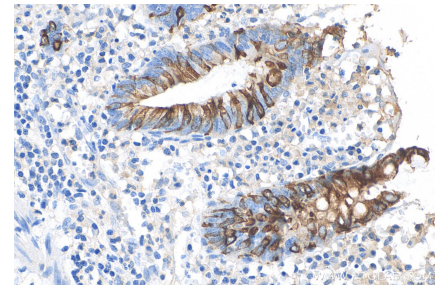
Ausgewählte Validierungsdaten



Various lysates were subjected to SDS PAGE followed by western blot with 82428-1-RR (Cytokeratin 20 antibody) at dilution of 1:22000 incubated at room temperature for 1.5 hours.



Immunohistochemical analysis of paraffin-embedded human appendicitis tissue slide using 82428-1-RR (Cytokeratin 20 antibody) at dilution of 1:1100 (under 10x lens). Heat mediated antigen retrieval with Tris-EDTA buffer (pH 9.0).



Immunohistochemical analysis of paraffin-embedded human appendicitis tissue slide using 82428-1-RR (Cytokeratin 20 antibody) at dilution of 1:1100 (under 40x lens). Heat mediated antigen retrieval with Tris-EDTA buffer (pH 9.0).