

Nur für Forschungszwecke

WT1 Rekombinanter Antikörper

Katalog-Nr.:82525-1-RR



Allgemeine Informationen

Katalog-Nr.: 82525-1-RR	GenBank-Zugangsnummer: BC032861	Reinigungsmethode: Protein-A-Reinigung
Größe: 100ul , Konzentration: 500 µg/ml von Nanodrop;	GeneID (NCBI): 7490	CloneNo.: 2J13
Wirt: Kaninchen	Vollständiger Name: Wilms tumor 1	Empfohlene Verdünnungen: WB 1:2000-1:10000
Isotyp: IgG	Berechnete Masse: 449 aa, 49 kDa, 57 kDa	
Immunogen Katalognummer: AG19541	Beobachtete Masse: 52-55 kDa	

Anwendungen

Geprüfte Anwendungen: WB, ELISA	Positivkontrollen: WB : K-562-Zellen, MCF-7-Zellen
Getestete Reaktivität: Human	

Hintergrundinformationen

The WT1 gene encodes a zinc finger DNA-binding protein that acts as a transcriptional activator or repressor depending on the cellular or chromosomal context, and it is required for the normal formation of the genitourinary system and mesothelial tissues. WT1 inhibits apoptosis through p53 and Bcl-2 and also inhibits the differentiation of leukemic cells. The function of WT1 may be isoform-specific: isoforms lacking the KTS motif may act as transcription factors. Isoforms containing the KTS motif may bind mRNA and play a role in mRNA metabolism or splicing. Isoform 1 has a lower affinity for DNA and can bind RNA. WT1 exists some isoforms with a range of molecular weight is 33-50 kDa.

Lagerung

Lagerungsbedingungen:
Bei -20°C lagern. Nach dem Versand ein Jahr lang stabil

Lagerungspuffer:
PBS mit 0.02% Natriumazid und 50% Glycerin pH 7.3.

Aliquotieren ist nicht notwendig bei -20°C Lagerung

*** 20ul-Größen enthalten 0.1% BSA

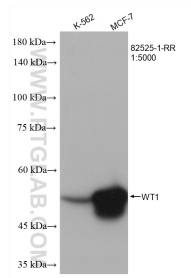
For technical support and original validation data for this product please contact:

T: 1 (888) 4PTGLAB (1-888-478-4522) (toll free
in USA), or 1(312) 455-8498 (outside USA)

E: proteintech@ptglab.com
W: ptglab.com

This product is exclusively available under Proteintech Group brand and is not available to purchase from any other manufacturer.

Ausgewählte Validierungsdaten



Various lysates were subjected to SDS PAGE followed by western blot with 82525-1-RR (WT1 antibody) at dilution of 1:5000 incubated at room temperature for 1.5 hours.