

Nur für Forschungszwecke

# CD223 Monoklonaler Antikörper

Katalog-Nr.: AB-65098



## Allgemeine Informationen

<b>Katalog-Nr.:</b> AB-65098	<b>GenBank-Zugangsnummer:</b> BC120591	<b>Reinigungsmethode:</b> Affinitätsreinigung
<b>Größe:</b> 100ug , 500 µg/ml	<b>GeneID (NCBI):</b> 16768	<b>CloneNo.:</b> C9B7W
<b>Wirt:</b> Ratte	<b>Vollständiger Name:</b> Lymphocyte-activation gene 3	<b>Anregungs-/Emissionsmaxima-Wellenlängen:</b> 404 nm / 458 nm
<b>Isotyp:</b> IgG1, kappa		

## Anwendungen

**Geprüfte Anwendungen:**  
FC

**Getestete Reaktivität:**  
Maus

## Hintergrundinformationen

Lymphocyte activation gene 3 protein (LAG-3), also known as CD223, is a type I transmembrane protein belonging to the immunoglobulin superfamily (PMID: 1692078). It is a CD4-related molecule that binds MHC class II with high affinity (PMID: 1692078; 9159144). LAG-3 is expressed on activated T and NK cells. Besides, natural CD4(+)CD25(+) Tregs express LAG-3 upon activation (PMID: 15485628). LAG-3 negatively regulates T-cell function and homeostasis, and contributes to the suppressor activity of Tregs (PMID: 14644131; 15485628).

## Lagerung

**Lagerungsbedingungen:**  
Store at 2-8°C. Avoid exposure to light. Stable for one year after shipment.

**Lagerungspuffer:**  
PBS with 0.09% sodium azide.

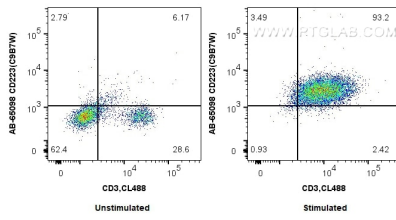
For technical support and original validation data for this product please contact:

T: 1 (888) 4PTGLAB (1-888-478-4522) (toll free in USA), or 1(312) 455-8498 (outside USA)

E: [proteintech@ptglab.com](mailto:proteintech@ptglab.com)  
W: [ptglab.com](http://ptglab.com)

**This product is exclusively available under Proteintech Group brand and is not available to purchase from any other manufacturer.**

## Ausgewählte Validierungsdaten



1x10<sup>6</sup> plate-bound Anti-CD3 and Anti-CD28 stimulated mouse splenocytes were surface co-stained with CoraLite®488 Plus Anti-Mouse CD3 (17A2) (CL488-65077, Clone: 17A2) and 0.5 µg Atlantic Blue™ Anti-Mouse CD223 (AB-65098, Clone: C9B7W), or 0.5 µg Isotype Control. Cells were not fixed.