

Nur für Forschungszwecke

# CD62L Monoklonaler Antikörper

Katalog-Nr.: AB-65167



## Allgemeine Informationen

Katalog-Nr.:

AB-65167

Größe:

100tests, 5 µl/test

Wirt:

Maus

Isotyp:

IgG1, kappa

GenBank-Zugangsnummer:

BC020758

GeneID (NCBI):

6402

Vollständiger Name:

selectin L

Berechnete Masse:

42 kDa

Reinigungsmethode:

Mit Protein-A-

Affinitätschromatographie gereinigt

CloneNo.:

DREG56

Anregungs-/Emissionsmaxima-

Wellenlängen:

404 nm / 458 nm

## Anwendungen

Geprüfte Anwendungen:

FC

Getestete Reaktivität:

Human

## Hintergrundinformationen

CD62L, also known as L-selectin or SELL, is a member of the selectin family of adhesion molecules that also include CD62E (E-selectin) and CD62P (P-selectin) (PMID: 2663882, 2473156, 1382078). CD62L is a highly glycosylated protein of 95-105 kDa on neutrophils and 74 kDa on lymphocytes (PMID: 1382078; 1694883, 1695155). CD62L is expressed on the surface of most leukocytes, including lymphocytes, neutrophils, monocytes, eosinophils, hematopoietic progenitor cells, and immature thymocytes (PMID: 1694883, 1688580). It mediates the binding of lymphocytes to high endothelial venules (HEV) of peripheral lymph nodes through interactions with a constitutively expressed ligand, and is also involved in lymphocyte, neutrophil, and monocyte attachment to endothelium at sites of inflammation (PMID: 1382078).

## Lagerung

Lagerungsbedingungen:

Store at 2-8°C. Avoid exposure to light. Stable for one year after shipment.

Lagerungspuffer:

PBS with 0.09% sodium azide and 0.5% BSA.

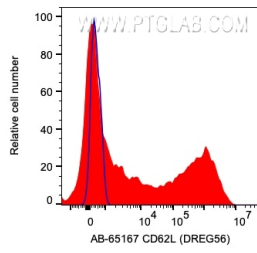
For technical support and original validation data for this product please contact:

T: 1 (888) 4PTGLAB (1-888-478-4522) (toll free in USA), or 1(312) 455-8498 (outside USA)

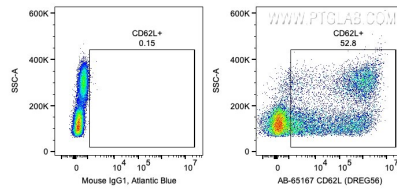
E: [proteintech@ptglab.com](mailto:proteintech@ptglab.com)  
W: [ptglab.com](http://ptglab.com)

This product is exclusively available under Proteintech Group brand and is not available to purchase from any other manufacturer.

## Ausgewählte Validierungsdaten



1X10<sup>6</sup> human PBMCs were surface stained with 5 ul Atlantic Blue™ Anti-Human CD62L (AB-65167, Clone:DREG56) or Mouse IgG1 Isotype Control. Cells were not fixed.



1X10<sup>6</sup> human PBMCs were surface stained with 5 ul Atlantic Blue™ Anti-Human CD62L (AB-65167, Clone:DREG56) or Mouse IgG1 Isotype Control. Cells were not fixed.