

Nur für Forschungszwecke

Mouse IgG2a isotype control Monoklonaler Antikörper



Katalog-Nr.: AB-66360-2

Allgemeine Informationen

Katalog-Nr.:

AB-66360-2

Größe:

100ug, Konzentration: 200 µg/ml von
Nanodrop;

Wirt:

Maus

Isotyp:

IgG2a

GenBank-Zugangsnummer:

GeneID (NCBI):

Vollständiger Name:

Reinigungsmethode:

Protein-A-Reinigung

CloneNo.:

11A1B2

Anregungs-/Emissionsmaxima-
Wellenlängen:

404 nm / 458 nm

Anwendungen

Geprüfte Anwendungen:

FC

Getestete Reaktivität:

Megathura Crenulata

Hintergrundinformationen

This antibody is used as the isotype control of mouse IgG2a. It can be used as the isotype control in Flow Cytometry, Immuno-Precipitation and other experiments. The immunogen of this antibody is Keyhole Limpet Hemocyanin (KLH).

Lagerung

Lagerungsbedingungen:

Store at 2-8°C. Avoid exposure to light. Stable for one year after shipment.

Lagerungspuffer:

PBS with 0.09% sodium azide and 0.5% BSA.

***** 20ul-Größen enthalten 0.1% BSA**

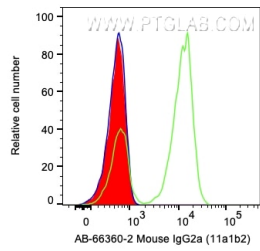
For technical support and original validation data for this product please contact:

T: 1 (888) 4PTGLAB (1-888-478-4522) (toll free
in USA), or 1(312) 455-8498 (outside USA)

E: proteintech@ptglab.com
W: ptglab.com

This product is exclusively available under Proteintech Group brand and is not available to purchase from any other manufacturer.

Ausgewählte Validierungsdaten



1×10^6 human PBMCs were surface stained with 0.2 μ g Atlantic Blue™ Anti-Mouse IgG2a isotype control (AB-66360-2, Clone:11A1B2) (red), Anti-Human CD3 (green), or unstained (blue). Cells were not fixed. Lymphocytes were gated.