

Nur für Forschungszwecke

# IgG1 Isotype Control Monoklonaler Antikörper



Katalog-Nr.: APC-65124

2 Publikationen

## Allgemeine Informationen

<b>Katalog-Nr.:</b> APC-65124	<b>GenBank-Zugangsnummer:</b> GeneID (NCBI): 16017	<b>Reinigungsmethode:</b> Affinitätsreinigung
<b>Größe:</b> 100ug, 0.2 mg/ml	<b>Vollständiger Name:</b> immunoglobulin heavy constant gamma 1 (G1m marker)	<b>CloneNo.:</b> MOPC-21
<b>Wirt:</b> Maus		<b>Anregungs-/Emissionsmaxima-Wellenlängen:</b> 650 nm / 660 nm
<b>Isotyp:</b> IgG1		

## Anwendungen

**Geprüfte Anwendungen:**  
FC

**In Publikationen genannte Anwendungen:**  
FC

**Getestete Reaktivität:**

## Hintergrundinformationen

The MOPC-21 immunoglobulin is useful as an isotype-matched control. The MOPC-21 immunoglobulin has an unknown binding specificity and is used as an isotype control for mouse IgG1 antibodies. This antibody has been quality-tested for flow cytometry as negative control.

## Bemerkenswerte Veröffentlichungen

Verfasser	Pubmed ID	Journal	Anwendung
Jie Wang	35074109	Carbohydr Polym	FC
Wenjing Li	34933092	Cell Signal	FC

## Lagerung

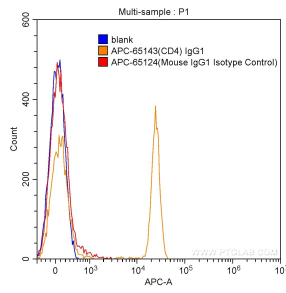
**Lagerungsbedingungen:**  
Store at 2-8°C. Avoid exposure to light. Stable for one year after shipment.

**Lagerungspuffer:**  
Phosphatbasierter Puffer mit 0,09% Natriumazid und 0,1% Gelatine, pH 7,2.

For technical support and original validation data for this product please contact:  
T: 1 (888) 4PTGLAB (1-888-478-4522) (toll free in USA), or 1(312) 455-8498 (outside USA)  
E: proteintech@ptglab.com  
W: ptglab.com

This product is exclusively available under Proteintech Group brand and is not available to purchase from any other manufacturer.

## Ausgewählte Validierungsdaten



1X10<sup>6</sup> human peripheral blood lymphocytes were surface stained with 0.50 ug APC Mouse IgG1 Isotype Control (APC-65124, clone: MOPC-21) (red) or with 0.50 ug APC Anti-Human CD4 (APC-65143, clone: RPA-T4) (orange), or not stained (blank) (blue). Cells were not fixed.