

Allgemeine Informationen

Katalog-Nr.:

APC-65161

Größe:

100ug, 0.1 mg/ml

Wirt:

Maus

Isotyp:

IgG2a, kappa

GenBank-Zugangsnummer:

BC016929

GeneID (NCBI):

4276

Vollständiger Name:

MHC class I polypeptide-related sequence A

Berechnete Masse:

383 aa, 43 kDa

Reinigungsmethode:

Der gereinigte Antikörper ist mit Allophycocyanin (APC) unter optimalen Bedingungen konjugiert. Das Konjugat wird mit Größenausschluss-Chromatographie gereinigt.

CloneNo.:

6D4

Anregungs-/Emissionsmaxima-Wellenlängen:

650 nm / 660 nm

Anwendungen

Geprüfte Anwendungen:

FC

Getestete Reaktivität:

Human

Hintergrundinformationen

Human MHC class I chain-related genes located within the HLA class I region of chromosome 6 encode MHC class I chain-related A and B (MICA and MICB) (PMID: 11429322). MICA and MICB are stress-inducible surface molecules that are not associated with β 2-microglobulin and do not present peptides (PMID: 9497295). They are expressed in intestinal epithelium and many epithelial tumors (PMID: 10359807). MICA and MICB are ligands for NKG2D which is an activating receptor that is expressed on most natural killer (NK) cells, CD8 $\alpha\beta$ T cells, and $\gamma\delta$ T cells (PMID: 10426993; 11491531). The monoclonal antibody 6D4 recognizes MICA and MICB.

Lagerung

Lagerungsbedingungen:

Store at 2-8°C. Avoid exposure to light. Stable for one year after shipment.

Lagerungspuffer:

PBS mit 0,1% Natriumazid.

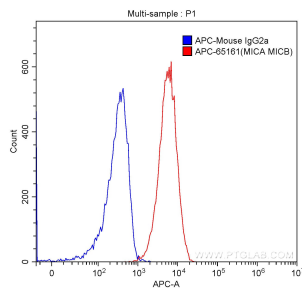
For technical support and original validation data for this product please contact:

T: 1 (888) 4PTGLAB (1-888-478-4522) (toll free in USA), or 1(312) 455-8498 (outside USA)

E: proteintech@ptglab.com
W: ptglab.com

This product is exclusively available under Proteintech Group brand and is not available to purchase from any other manufacturer.

Ausgewählte Validierungsdaten



1X10⁶ HeLa cells were surface stained with 0.20 ug/test APC Anti-Human MICA/MICB (APC-65161, Clone:6D4) (red) or 0.20 ug isotype control antibody (blue). Cells were not fixed.