

Nur für Forschungszwecke

CD42b Monoklonaler Antikörper

Katalog-Nr.: APC-65163



Allgemeine Informationen

Katalog-Nr.:

APC-65163

Größe:

100tests, 5 µl/test

Wirt:

Maus

Isotyp:

IgG1

GenBank-Zugangsnummer:

BC027955

GeneID (NCBI):

2811

Vollständiger Name:

glycoprotein Ib (platelet), alpha polypeptide

Berechnete Masse:

626 aa, 69 kDa

Reinigungsmethode:

Mit Protein-A-

Affinitätschromatographie gereinigt

CloneNo.:

AK2

Anregungs-/Emissionsmaxima-

Wellenlängen:

650 nm / 660 nm

Anwendungen

Geprüfte Anwendungen:

FC

Getestete Reaktivität:

Human

Hintergrundinformationen

CD42b, also known as platelet glycoprotein Ib alpha chain (GPIb alpha), is a type I transmembrane glycoprotein of 135-145 kDa (PMID: 2656709). It is expressed on platelets and megakaryocytes. CD42b and CD42c (GPIb beta) are linked by a disulphide bond to form GPIb (PMID: 7660135). GPIb forms a noncovalent complex with CD42a (GPIX) and CD42d (GPV) and acts as a receptor for von Willebrand factor (vWF) and thrombin (PMID: 7660135; 3759960). The GPIb-V-IX complex mediates vWF-dependent platelet adhesion to blood vessels. Defects in the expression of CD42b result in Bernard-Soulier syndromes and platelet-type von Willebrand disease (PMID: 9371310).

Lagerung

Lagerungsbedingungen:

Store at 2-8°C. Avoid exposure to light. Stable for one year after shipment.

Lagerungspuffer:

PBS with 0.09% sodium azide and 0.5% BSA.

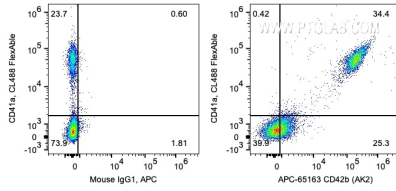
For technical support and original validation data for this product please contact:

T: 1 (888) 4PTGLAB (1-888-478-4522) (toll free in USA), or 1(312) 455-8498 (outside USA)

E: proteintech@ptglab.com
W: ptglab.com

This product is exclusively available under Proteintech Group brand and is not available to purchase from any other manufacturer.

Ausgewählte Validierungsdaten



1X10⁶ human peripheral blood platelets were surface co-stained with Anti-Human CD41a labeled with FlexAble CoraLite® Plus 488 Antibody Labeling Kit for Mouse IgG1 (KFA041) and 5 ul APC Anti-Human CD42b (APC-65163, Clone: AK2) or Mouse IgG1 Isotype Control. Cells were not fixed.