

Nur für Forschungszwecke

IgG2b Isotype Control Monoklonaler Antikörper



Katalog-Nr.: APC-65211

Allgemeine Informationen

Katalog-Nr.: APC-65211	GenBank-Zugangsnummer: GeneID (NCBI):	Reinigungsmethode: Affinitätsreinigung
Größe: 100ug, 0.2 mg/mL	Vollständiger Name:	CloneNo.: LTF-2
Wirt: Ratte		Anregungs-/Emissionsmaxima-Wellenlängen: 650 nm / 660 nm
Isotyp: IgG2b		

Anwendungen

Geprüfte Anwendungen:
FC
Getestete Reaktivität:

Hintergrundinformationen

The LTF-2 immunoglobulin is useful as an isotype-matched control. The LTF-2 immunoglobulin has an unknown binding specificity and is used as an isotype control for rat IgG2b antibodies. This antibody has been quality-tested for flow cytometry as negative control.

Lagerung

Lagerungsbedingungen:
Bei 2-8°C lagern. Vor Licht schützen.
Lagerungspuffer:
Phosphatbasierter Puffer mit 0,09% Natriumazid und 0,1% Gelatine, pH 7,2.

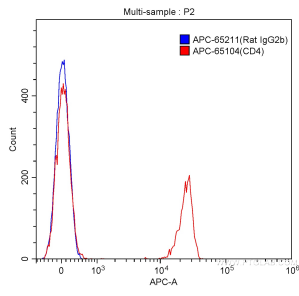
For technical support and original validation data for this product please contact:

T: 1 (888) 4PTGLAB (1-888-478-4522) (toll free in USA), or 1(312) 455-8498 (outside USA)

E: proteintech@ptglab.com
W: ptglab.com

This product is exclusively available under Proteintech Group brand and is not available to purchase from any other manufacturer.

Ausgewählte Validierungsdaten



1X10⁶ BALB/c mouse splenocytes were surface stained with 0.25 ug APC Rat IgG2b Isotype Control (APC-65211, Clone: LTF-2) (blue) or 0.25 ug APC Anti-Mouse CD4 (APC-65104, Clone: GK1.5) (red). Cells were not fixed.