

Nur für Forschungszwecke

PKM1-specific Polyklonaler Antikörper



Katalog-Nr.: Biotin-15821

Allgemeine Informationen

Katalog-Nr.: Biotin-15821	GenBank-Zugangsnummer: NM_182470	Reinigungsmethode: Antigen-Affinitätsreinigung
Größe: 100ul, Konzentration: 573 µg/ml von Nanodrop;	GeneID (NCBI): 5315	Empfohlene Verdünnungen: IHC 1:50-1:500
Wirt: Kaninchen	Vollständiger Name: PKM pyruvate kinase, muscle	
Isotyp: IgG	Berechnete Masse: 58 kDa	
	Beobachtete Masse: 58 kDa	

Anwendungen

Geprüfte Anwendungen:
IHC

Positivkontrollen:

Getestete Reaktivität:
Human, Maus, Ratte

IHC: Mauthirngewebe, Maus-Skelettmuskelgewebe

Hinweis-IHC: Antigendemaskierung mit TE-Puffer pH 9,0 empfohlen. (*) Wahlweise kann die Antigendemaskierung auch mit Citratpuffer pH 6,0 erfolgen.

Hintergrundinformationen

PKM, also named as OIP3, PK2, PK3, PKM, p58, THBP1, CTHBP and Tumor M2-PK, belongs to the pyruvate kinase family. It is glycolytic enzyme that catalyzes the transfer of a phosphoryl group from phosphoenolpyruvate (PEP) to ADP, generating ATP. It stimulates POU5F1-mediated transcriptional activation. PKM plays a general role in caspase independent cell death of tumor cells. PKM has 2 isoforms named PKM1 and PKM2. The primary pyruvate kinase isoform before tumour development is PK-M1; however, the primary isoform from four independent tumours is PK-M2 (PMID:18337823). This antibody is conjugated with Biotin and it's specific to PKM1 isoform.

Lagerung

Lagerungsbedingungen:

Bei -20°C lagern. Vor Licht schützen.

Lagerungspuffer:

PBS mit 50% Glycerin, pH 7,3.

Aliquotieren ist nicht notwendig bei -20°C Lagerung

***** 20ul-Größen enthalten 0.1% BSA**

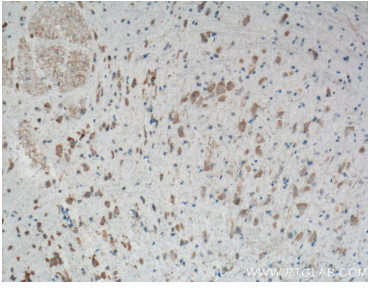
For technical support and original validation data for this product please contact:

T: 1 (888) 4PTGLAB (1-888-478-4522) (toll free in USA), or 1(312) 455-8498 (outside USA)

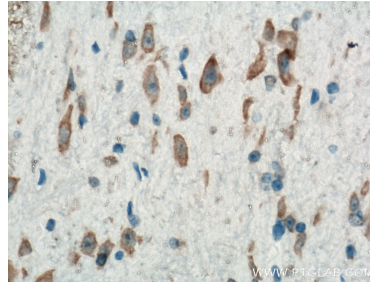
E: proteintech@ptglab.com
W: ptglab.com

This product is exclusively available under Proteintech Group brand and is not available to purchase from any other manufacturer.

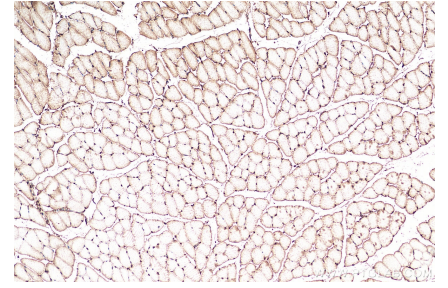
Ausgewählte Validierungsdaten



Immunohistochemical analysis of paraffin-embedded mouse brain tissue slide using Biotin-15821(PKM1-specific antibody) at dilution of 1:200 (under 10x lens. Heat mediated antigen retrieval with Tris-EDTA buffer (pH 9.0).



Immunohistochemical analysis of paraffin-embedded mouse brain tissue slide using Biotin-15821(PKM1-specific antibody) at dilution of 1:200 (under 40x lens. Heat mediated antigen retrieval with Tris-EDTA buffer (pH 9.0).



Immunohistochemical analysis of paraffin-embedded mouse skeletal muscle tissue slide using Biotin-15821 (PKM1-specific antibody) at dilution of 1:200 (under 10x lens). Heat mediated antigen retrieval with Tris-EDTA buffer (pH 9.0).