

Nur für Forschungszwecke

# CD107a / LAMP1 Monoklonaler Antikörper



Katalog-Nr.:CL405-65051

## Allgemeine Informationen

<b>Katalog-Nr.:</b> CL405-65051	<b>GenBank-Zugangsnummer:</b> BC006345	<b>Reinigungsmethode:</b> Protein-G-Reinigung
<b>Größe:</b> 100tests , 5 µl/test	<b>GeneID (NCBI):</b> 3916	<b>CloneNo.:</b> H4A3
<b>Wirt:</b> Maus	<b>Vollständiger Name:</b> lysosomal-associated membrane protein 1	<b>Anregungs-/Emissionsmaxima-Wellenlängen:</b> 399 nm / 422 nm
<b>Isotyp:</b> IgG1		

## Anwendungen

**Geprüfte Anwendungen:**  
FC (Intra)

**Getestete Reaktivität:**  
Human

## Hintergrundinformationen

LAMP1 (CD107a) is a heavily glycosylated membrane protein enriched in the lysosomal membrane. LAMP1 is extensively glycosylated with asparagine-linked oligosaccharides which protect it from intracellular proteolysis (PMID: 10521503). Although LAMP1 is expressed largely in the endosome-lysosomal membrane of cells, it is also found on the plasma membrane (PMID: 16168398). Elevated LAMP1 expression at the cell surface has also been detected during platelet and granulocytic cell activation, as well as in some tumor cells (PMID: 29085473). LAMP1 functions to provide selectins with carbohydrate ligands. This protein has also been shown to be a marker of degranulation on lymphocytes such as CD8+ and NK cells and may also play a role in tumor cell differentiation and metastasis (PMID: 18835598; 29085473; 9426697).

## Lagerung

**Lagerungsbedingungen:**  
Store at 2-8°C. Avoid exposure to light. Stable for one year after shipment.

**Lagerungspuffer:**  
PBS with 0.09% sodium azide and 0.5% BSA.

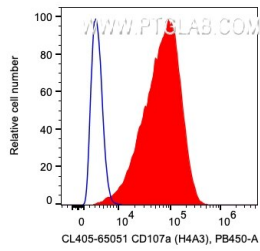
For technical support and original validation data for this product please contact:

T: 1 (888) 4PTGLAB (1-888-478-4522) (toll free in USA), or 1(312) 455-8498 (outside USA)

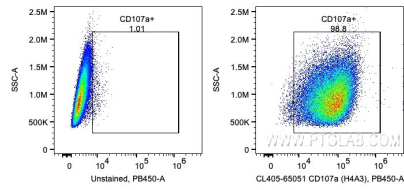
E: [proteintech@ptglab.com](mailto:proteintech@ptglab.com)  
W: [ptglab.com](http://ptglab.com)

This product is exclusively available under Proteintech Group brand and is not available to purchase from any other manufacturer.

## Ausgewählte Validierungsdaten



1X10<sup>6</sup> HeLa cells were intracellularly stained with 5 ul CoraLite® Plus 405 Anti-Human CD107a / LAMP1 (CL405-65051, Clone:H4A3). Cells were fixed with 4% PFA and permeabilized with Flow Cytometry Perm Buffer (PF00011-C).



1X10<sup>6</sup> HeLa cells were intracellularly stained with 5 ul CoraLite® Plus 405 Anti-Human CD107a / LAMP1 (CL405-65051, Clone:H4A3). Cells were fixed with 4% PFA and permeabilized with Flow Cytometry Perm Buffer (PF00011-C).