

Nur für Forschungszwecke

CD18 Monoklonaler Antikörper

Katalog-Nr.:CL405-65190



Allgemeine Informationen

| | | |
|---------------------------------------|--------------------------------------------------------------------------------------------------|--------------------------------------------------------------------|
| Katalog-Nr.: CL405-65190 | GenBank-Zugangsnummer: BC005861 | Reinigungsmethode: Protein-G-Reinigung |
| Größe: 100tests , 5 µl/test | GeneID (NCBI): 3689 | CloneNo.: TS1/18 |
| Wirt: Maus | Vollständiger Name: integrin, beta 2 (complement component 3 receptor 3 and 4 subunit) | Anregungs-/Emissionsmaxima-Wellenlängen: 399 nm / 422 nm |
| Isotyp: IgG1, kappa | Berechnete Masse: 85 kDa | |

Anwendungen

Geprüfte Anwendungen:
FC

Getestete Reaktivität:
Human

Hintergrundinformationen

CD18, also known as integrin beta-2, is a transmembrane protein that forms heterodimers with CD11a, CD11b, CD11c, CD11d (PMID: 1968349). CD11a/CD18 (LFA-1) is expressed by all leukocytes, while CD11b/CD18 (Mac-1) and CD11c/CD18 (p150,95) are normally restricted to expression on monocytes, macrophages, polymorphonuclear lymphocytes (PMNs), and natural killer cells (PMID: 1968349; 3109455; 10946284). CD18 plays an important role in mediating cell adhesion during immune response and defects of CD18 cause leukocyte adhesion deficiency (PMID: 3594570).

Lagerung

Lagerungsbedingungen:
Store at 2-8°C. Avoid exposure to light. Stable for one year after shipment.
Lagerungspuffer:
PBS with 0.09% sodium azide and 0.5% BSA.

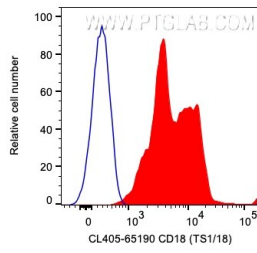
For technical support and original validation data for this product please contact:

T: 1 (888) 4PTGLAB (1-888-478-4522) (toll free in USA), or 1(312) 455-8498 (outside USA)

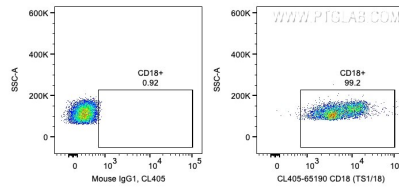
E: proteintech@ptglab.com
W: ptglab.com

This product is exclusively available under Proteintech Group brand and is not available to purchase from any other manufacturer.

Ausgewählte Validierungsdaten



1X10⁶ human PBMCs were surface stained with 5 ul CoraLite® Plus 405 Anti-Human CD18 (CL405-65190, Clone:TS1/18) or Mouse IgG1 Isotype Control. Cells were not fixed. Lymphocytes were gated.



1X10⁶ human PBMCs were surface stained with 5 ul CoraLite® Plus 405 Anti-Human CD18 (CL405-65190, Clone:TS1/18) or Mouse IgG1 Isotype Control. Cells were not fixed. Lymphocytes were gated.