

Nur für Forschungszwecke

# CD5 Monoklonaler Antikörper

Katalog-Nr.:CL405-65200



## Allgemeine Informationen

<b>Katalog-Nr.:</b> CL405-65200	<b>GenBank-Zugangsnummer:</b> BC027901	<b>Reinigungsmethode:</b> Protein-A-Reinigung
<b>Größe:</b> 100tests , 5 µl/test	<b>GeneID (NCBI):</b> 921	<b>CloneNo.:</b> L17F12
<b>Wirt:</b> Maus	<b>Vollständiger Name:</b> CD5 molecule	<b>Anregungs-/Emissionsmaxima-Wellenlängen:</b> 399 nm / 422 nm
<b>Isotyp:</b> Mouse IgG2a, kappa	<b>Berechnete Masse:</b> 495 aa, 55 kDa	

## Anwendungen

**Geprüfte Anwendungen:**  
FC

**Getestete Reaktivität:**  
Human

## Hintergrundinformationen

CD5 is a type I transmembrane glycoprotein of the scavenger receptor cysteine-rich family (PMID: 12403363). CD5 is expressed on a majority of thymocytes, mature T cells, B cell subsets, and peripheral blood dendritic cells (PMID: 9858516; 6156984; 10379049; 1384337). CD5 may act as a receptor in regulating T-cell proliferation. It functions as a negative regulator of TCR signaling during thymocyte development (PMID: 7542801).

## Lagerung

**Lagerungsbedingungen:**  
Store at 2-8°C. Avoid exposure to light. Stable for one year after shipment.

**Lagerungspuffer:**  
PBS with 0.09% sodium azide and 0.5% BSA.

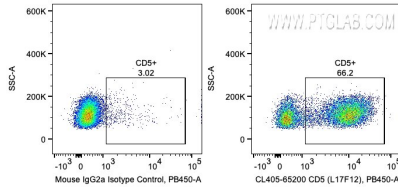
For technical support and original validation data for this product please contact:

T: 1 (888) 4PTGLAB (1-888-478-4522) (toll free in USA), or 1(312) 455-8498 (outside USA)

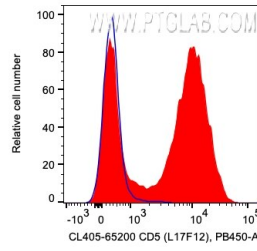
E: [proteintech@ptglab.com](mailto:proteintech@ptglab.com)  
W: [ptglab.com](http://ptglab.com)

**This product is exclusively available under Proteintech Group brand and is not available to purchase from any other manufacturer.**

## Ausgewählte Validierungsdaten



1X10<sup>6</sup> human PBMCs were surface stained with 5 ul CoraLite® Plus 405 Anti-Human CD5 (CL405-65200, Clone: L17F12) or Mouse IgG2a Isotype Control. Cells were not fixed. Lymphocytes were gated.



1X10<sup>6</sup> human PBMCs were surface stained with 5 ul CoraLite® Plus 405 Anti-Human CD5 (CL405-65200, Clone: L17F12) or Mouse IgG2a Isotype Control. Cells were not fixed. Lymphocytes were gated.