

Nur für Forschungszwecke

CD45RA Monoklonaler Antikörper

Katalog-Nr.:CL405-65226



Allgemeine Informationen

Katalog-Nr.:

CL405-65226

Größe:

100tests , 5 µl/test

Wirt:

Maus

Isotyp:

IgG1, kappa

GenBank-Zugangsnummer:

BC014239

GeneID (NCBI):

5788

Vollständiger Name:

protein tyrosine phosphatase,
receptor type, C

Berechnete Masse:

1304 aa, 147 kDa

Reinigungsmethode:

Affinitätsreinigung

CloneNo.:

F8-11-13

Anregungs-/Emissionsmaxima-

Wellenlängen:

399 nm / 422 nm

Anwendungen

Geprüfte Anwendungen:

FC

Getestete Reaktivität:

Human

Hintergrundinformationen

CD45, also known as protein tyrosine phosphatase, receptor type C, is a type I transmembrane protein expressed on the surface of all haematopoietic cells with the exception of erythrocytes and platelets (PMID: 3489673; 28615666). CD45 is a pan-haematopoietic cell marker and has been shown to be essential for T- and B-cell activation and signalling (PMID: 9429890; 16378097). CD45 exists as multiple isoforms due to alternative splicing of three exons (4, 5, and 6, designated A, B, and C) in the extracellular domain (PMID: 12414720). CD45RA is expressed on naïve T cells, B cells, and monocytes (PMID: 1830500; 14687231).

Lagerung

Lagerungsbedingungen:

Store at 2-8°C. Avoid exposure to light. Stable for one year after shipment.

Lagerungspuffer:

PBS with 0.09% sodium azide and 0.5% BSA.

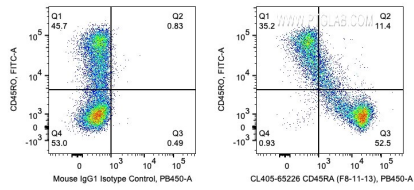
For technical support and original validation data for this product please contact:

T: 1 (888) 4PTGLAB (1-888-478-4522) (toll free
in USA), or 1(312) 455-8498 (outside USA)

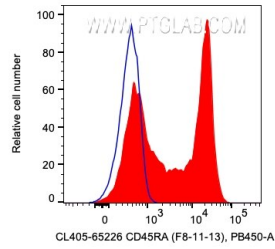
E: proteintech@ptglab.com
W: ptglab.com

This product is exclusively available under Proteintech Group brand and is not available to purchase from any other manufacturer.

Ausgewählte Validierungsdaten



1X10⁶ human PBMCs were surface co-stained with FITC Anti-Human CD45RO and 5 ul CoraLite® Plus 405 Anti-Human CD45RA (CL405-65226, Clone:F8-11-13) or Mouse IgG1 Isotype Control. Cells were not fixed. Lymphocytes were gated.



1X10⁶ human PBMCs were surface stained with 5 ul CoraLite® Plus 405 Anti-Human CD45RA (CL405-65226, Clone:F8-11-13) or Mouse IgG1 Isotype Control. Cells were not fixed. Lymphocytes were gated.