

Nur für Forschungszwecke

# CD35 Monoklonaler Antikörper

Katalog-Nr.:CL405-65254



## Allgemeine Informationen

<b>Katalog-Nr.:</b> CL405-65254	<b>GenBank-Zugangsnummer:</b> NM_000573	<b>Reinigungsmethode:</b> Affinitätsreinigung
<b>Größe:</b> 100tests , 5 µl/test	<b>GeneID (NCBI):</b> 1378	<b>CloneNo.:</b> E11
<b>Wirt:</b> Maus	<b>Vollständiger Name:</b> complement component (3b/4b) receptor 1 (Knops blood group)	<b>Anregungs-/Emissionsmaxima- Wellenlängen:</b> 399 nm / 422 nm
<b>Isotyp:</b> IgG1, kappa	<b>Berechnete Masse:</b> 224 kDa	

## Anwendungen

**Geprüfte Anwendungen:**  
FC

**Getestete Reaktivität:**  
Human

## Hintergrundinformationen

### Lagerung

**Lagerungsbedingungen:**  
Store at 2-8°C. Avoid exposure to light. Stable for one year after shipment.  
**Lagerungspuffer:**  
PBS with 0.09% sodium azide and 0.5% BSA.

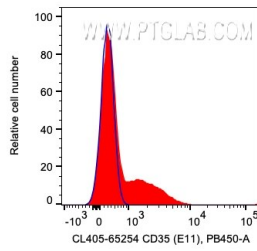
For technical support and original validation data for this product please contact:

T: 1 (888) 4PTGLAB (1-888-478-4522) (toll free  
in USA), or 1(312) 455-8498 (outside USA)

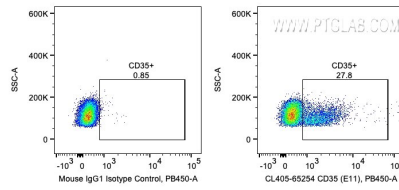
E: [proteintech@ptglab.com](mailto:proteintech@ptglab.com)  
W: [ptglab.com](http://ptglab.com)

**This product is exclusively available under Proteintech Group brand and is not available to purchase from any other manufacturer.**

## Ausgewählte Validierungsdaten



1X10<sup>6</sup> human PBMCs were surface stained with 5 ul CoraLite® Plus 405 Anti-Human CD35 (CL405-65254, Clone:E11) or Mouse IgG1 Isotype Control. Cells were not fixed. Lymphocytes were gated.



1X10<sup>6</sup> human PBMCs were surface stained with 5 ul CoraLite® Plus 405 Anti-Human CD35 (CL405-65254, Clone:E11) or Mouse IgG1 Isotype Control. Cells were not fixed. Lymphocytes were gated.