

Nur für Forschungszwecke

CD33 Monoklonaler Antikörper

Katalog-Nr.:CL405-65272



Allgemeine Informationen

Katalog-Nr.: CL405-65272	GenBank-Zugangsnummer: BC028152	Reinigungsmethode: Affinitätsreinigung
Größe: 100tests , 5 ul/test	GeneID (NCBI): 945	CloneNo.: WM53
Wirt: Maus	Vollständiger Name: CD33 molecule	Anregungs-/Emissionsmaxima-Wellenlängen: 399 nm / 422 nm
Isotyp: IgG1, kappa	Berechnete Masse: 364 aa, 40 kDa	

Anwendungen

Geprüfte Anwendungen:
FC

Getestete Reaktivität:
Human

Hintergrundinformationen

CD33, also referred to as Siglec-3, is a 67-kDa glycosylated transmembrane protein of sialic acid-binding immunoglobulin-like lectin (siglec) family. CD33 is expressed on monocytes, myeloid progenitors, granulocytes, mast cells, some T cells. It may mediate cell-to-cell adhesion and act as a receptor that inhibits the proliferation of normal and leukemic myeloid cells.

Lagerung

Lagerungsbedingungen:
Store at 2-8°C. Avoid exposure to light. Stable for one year after shipment.

Lagerungspuffer:
PBS with 0.09% sodium azide and 0.5% BSA.

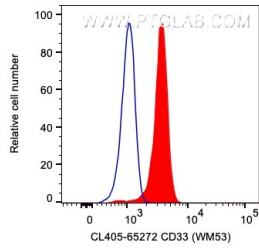
For technical support and original validation data for this product please contact:

T: 1 (888) 4PTGLAB (1-888-478-4522) (toll free in USA), or 1(312) 455-8498 (outside USA)

E: proteintech@ptglab.com
W: ptglab.com

This product is exclusively available under Proteintech Group brand and is not available to purchase from any other manufacturer.

Ausgewählte Validierungsdaten



1X10⁶ human PBMCs were surface stained with 5 ul CoraLite® Plus 405 Anti-Human CD33 (CL405-65272, Clone: WM53) (red) or unstained. Cells were not fixed. Monocytes were gated.