

Nur für Forschungszwecke

# IgG1 isotype control Monoklonaler Antikörper



Katalog-Nr.:CL405-66360-1

## Allgemeine Informationen

Katalog-Nr.:  
CL405-66360-1

Größe:  
100ug , Konzentration: 0.2 mg/mL von  
Nanodrop;

Wirt:  
Maus

Isotyp:  
IgG1

GenBank-Zugangsnummer:

GeneID (NCBI):

Vollständiger Name:

Reinigungsmethode:

Protein-G-Reinigung

CloneNo.:

1F8D3

Anregungs-/Emissionsmaxima-  
Wellenlängen:

399 nm / 422 nm

## Anwendungen

Geprüfte Anwendungen:

FC

Getestete Reaktivität:

Megathura Crenulata

## Hintergrundinformationen

This antibody is used as the isotype control of mouse IgG1 (Kappa). It can be used as the isotype control in Flow Cytometry, Immuno-Precipitation and other experiments. The immunogen of this antibody is Keyhole Limpet Hemocyanin (KLH).

## Lagerung

Lagerungsbedingungen:

Store at 2-8°C. Avoid exposure to light. Stable for one year after shipment.

Lagerungspuffer:

PBS with 0.09% sodium azide and 0.5% BSA.

**\*\*\* 20ul-Größen enthalten 0.1% BSA**

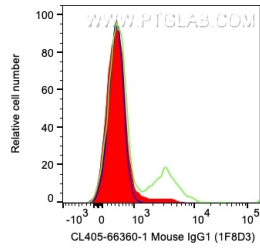
For technical support and original validation data for this product please contact:

T: 1 (888) 4PTGLAB (1-888-478-4522) (toll free  
in USA), or 1(312) 455-8498 (outside USA)

E: [proteintech@ptglab.com](mailto:proteintech@ptglab.com)  
W: [ptglab.com](http://ptglab.com)

**This product is exclusively available under Proteintech Group brand and is not available to purchase from any other manufacturer.**

## Ausgewählte Validierungsdaten



$1 \times 10^6$  human PBMCs were surface stained with 0.2  $\mu$ g CoraLite® Plus 405 Anti-Mouse IgG1 isotype control (CL405-66360-1, Clone:1F8D3) (red), CL405 Anti-Human CD21 (green), or unstained (blue). Cells were not fixed. Lymphocytes were gated.