

Nur für Forschungszwecke

Mouse IgG2a isotype control Monoklonaler Antikörper



Katalog-Nr.: CL405-66360-2

Allgemeine Informationen

Katalog-Nr.: CL405-66360-2	GenBank-Zugangsnummer: GeneID (NCBI):	Reinigungsmethode: Protein-A-Reinigung
Größe: 100ug , Konzentration: 200 µg/ml von Nanodrop;	Vollständiger Name:	CloneNo.: 11A1B2
Wirt: Maus		Anregungs-/Emissionsmaxima- Wellenlängen: 399 nm / 422 nm
Isotyp: IgG2a		

Anwendungen

Geprüfte Anwendungen:
FC

Getestete Reaktivität:
Megathura Crenulata

Hintergrundinformationen

This antibody is used as the isotype control of mouse IgG2a. It can be used as the isotype control in Flow Cytometry, Immuno-Precipitation and other experiments. The immunogen of this antibody is Keyhole Limpet Hemocyanin (KLH).

Lagerung

Lagerungsbedingungen:
Store at 2-8°C. Avoid exposure to light. Stable for one year after shipment.

Lagerungspuffer:
PBS with 0.09% sodium azide and 0.5% BSA.

***** 20ul-Größen enthalten 0.1% BSA**

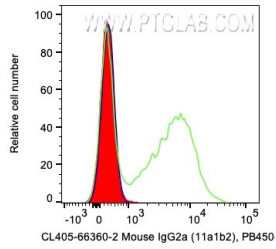
For technical support and original validation data for this product please contact:

T: 1 (888) 4PTGLAB (1-888-478-4522) (toll free
in USA), or 1(312) 455-8498 (outside USA)

E: proteintech@ptglab.com
W: ptglab.com

This product is exclusively available under Proteintech Group brand and is not available to purchase from any other manufacturer.

Ausgewählte Validierungsdaten



1×10^6 human PBMCs were surface stained with 0.2 μ g CoraLite® Plus 405 Anti-Mouse IgG2a isotype control (CL405-66360-2, Clone: 11A1B2) (red), CL405 Anti-Human CD7 (green), or unstained (blue). Cells were not fixed. Lymphocytes were gated.