

Nur für Forschungszwecke

S100A6 Polyklonaler Antikörper

Katalog-Nr.:CL488-10245

Vorgestelltes Produkt



Allgemeine Informationen

Katalog-Nr.: CL488-10245	GenBank-Zugangsnummer: BC001431	Reinigungsmethode: Antigen-Affinitätsreinigung
Größe: 100ul , Konzentration: 1000 µg/ml von6277	GeneID (NCBI): S100 calcium binding protein A6	Empfohlene Verdünnungen: IF 1:50-1:500
Nanodrop;	Vollständiger Name: S100 calcium binding protein A6	Anregungs-/Emissionsmaxima-Wellenlängen: 493 nm / 522 nm
Wirt: Kaninchen	Berechnete Masse: 10 kDa	
Isotyp: IgG		
Immunogen Katalognummer: AG0385		

Anwendungen

Geprüfte Anwendungen: FC (Intra), IF	Positivkontrollen: IF : MCF-7-Zellen,
Getestete Reaktivität: Human	

Hintergrundinformationen

S100A6 is also named as calcyclin, prolactin receptor-associated protein (PRA), growth factor-inducible protein 2A9 or MLN4. It belongs to S100 family of low molecular weight, acidic, calcium-binding proteins which contain two EF-hand calcium binding sites. S100A6 may function as a calcium sensor to activate several processes in the calcium signal transduction pathway of cell growth, proliferation, secretion and exocytosis. The antibody is specific for S100A6.

Lagerung

Lagerungsbedingungen:
Bei -20°C lagern. Vor Licht schützen.
Lagerungspuffer:
BS mit 50% Glycerin, 0,05% Proclin300, 0,5% BSA, pH 7,3.
Aliquotieren ist nicht notwendig bei -20°C Lagerung

***** 20ul-Größen enthalten 0.1% BSA**

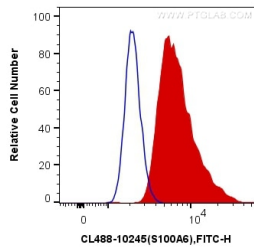
For technical support and original validation data for this product please contact:

T: 1 (888) 4PTGLAB (1-888-478-4522) (toll free in USA), or 1(312) 455-8498 (outside USA)

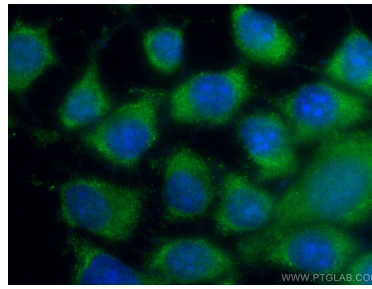
E: proteintech@ptglab.com
W: ptglab.com

This product is exclusively available under Proteintech Group brand and is not available to purchase from any other manufacturer.

Ausgewählte Validierungsdaten



1×10^6 MCF-7 cells were intracellularly stained with 0.4 μ g CoraLite® Plus 488 Anti-Human S100A6 (CL488-10245) (red), or 0.4 μ g Control Antibody. Cells were fixed and permeabilized with Transcription Factor Staining Buffer Kit (PF00011).



Immunofluorescent analysis of (-20°C Ethanol) fixed MCF-7 cells using CoraLite® Plus 488 S100A6 antibody (CL488-10245) at dilution of 1:200.