

Nur für Forschungszwecke

transgelin/SM22 Polyklonaler Antikörper



Katalog-Nr.:CL488-10493

Vorgestelltes Produkt

Allgemeine Informationen

Katalog-Nr.: CL488-10493	GenBank-Zugangsnummer: BC004927	Reinigungsmethode: Antigen-Affinitätsreinigung
Größe: 100ul , Konzentration: 1000 µg/ml von6876	GeneID (NCBI): von6876	Empfohlene Verdünnungen: IF 1:50-1:500
Nanodrop;	Vollständiger Name: transgelin	Anregungs-/Emissionsmaxima-Wellenlängen: 493 nm / 522 nm
Wirt: Kaninchen	Berechnete Masse: 22 kDa	
Isotyp: IgG	Beobachtete Masse: 19-22 kDa	
Immunogen Katalognummer: AG0764		

Anwendungen

Geprüfte Anwendungen: IF	Positivkontrollen: IF : Mausherzgewebe,
Getestete Reaktivität: Human, Maus, Ratte	

Hintergrundinformationen

The transgelin family is a group of proteins that belong to 22kd actin-related calponin superfamily. Of all three isoforms, transgelin 1 is the best characterized. Transgelin 1, also known as SM22alpha, is a specific marker for differentiated smooth muscle cells. Transgelin 2, also known as SM22 beta, is expressed by both smooth muscle and non-smooth muscle cells in a temporally and spatially regulated pattern. Transgelin 3, also known as NP25, is only found in highly differentiated neuronal cells. This antibody was generated against full length transgelin 1 protein. It can cross-react with other two transgelins based on the sequence similarity.

Lagerung

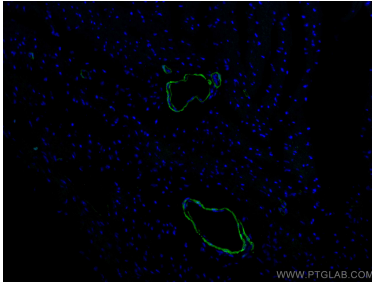
Lagerungsbedingungen:
Bei -20°C lagern. Vor Licht schützen.
Lagerungspuffer:
BS mit 50% Glycerin, 0,05% Proclin300, 0,5% BSA, pH 7,3.
Aliquotieren ist nicht notwendig bei -20°C Lagerung

*** 20ul-Größen enthalten 0.1% BSA

For technical support and original validation data for this product please contact:
T: 1 (888) 4PTGLAB (1-888-478-4522) (toll free in USA), or 1(312) 455-8498 (outside USA)
E: proteintech@ptglab.com
W: ptglab.com

This product is exclusively available under Proteintech Group brand and is not available to purchase from any other manufacturer.

Ausgewählte Validierungsdaten



Immunofluorescent analysis of (4% PFA) fixed mouse heart tissue using CoraLite® Plus 488 transgelin/SM22 antibody (CL488-10493) at dilution of 1:200.