

Nur für Forschungszwecke

KEAP1 Polyklonaler Antikörper

Katalog-Nr.:CL488-10503

Vorgestelltes Produkt



Allgemeine Informationen

Katalog-Nr.: CL488-10503	GenBank-Zugangsnummer: BC002930	Reinigungsmethode: Antigen-Affinitätsreinigung
Größe: 100ul , Konzentration: 1000 µg/ml von9817	GeneID (NCBI): von9817	Empfohlene Verdünnungen: IF 1:50-1:500
Nanodrop;	Vollständiger Name: kelch-like ECH-associated protein 1	Anregungs-/Emissionsmaxima-Wellenlängen: 493 nm / 522 nm
Wirt: Kaninchen	Berechnete Masse: 624 aa, 70 kDa	
Isotyp: IgG	Beobachtete Masse: 70 kDa	
Immunogen Katalognummer: AG0779		

Anwendungen

Geprüfte Anwendungen: IF	Positivkontrollen: IF : humanes Mammakarzinomgewebe,
Getestete Reaktivität: Human, Maus, Ratte	

Hintergrundinformationen

KEAP1, also named as INRF2, KIAA0132 and KLHL19, is part of a multiprotein complex that contains the CUL3-ROC1 ubiquitin ligase, which can ubiquitinate the N-terminal domain of NRF2[PMID: 20173742]. Two molecules of KEAP1 bind to two distinct sites in the N-terminal region of NRF2, the ETGE and DLG sites, which affect the KEAP1-NRF2 interaction and/or its physiological consequences[PMID: 22215675]. KEAP1 retains NFE2L2/NRF2 in the cytosol. It functions as substrate adapter protein for the E3 ubiquitin ligase complex formed by CUL3 and RBX1[PMID: 20427290]. It also retains BPTF in the cytosol. This antibody is a rabbit polyclonal antibody raised against residues near the C terminus of human KEAP1.

Read more about this antibody on the blog:<http://blog.ptglab.com/index.php/nsclc-research-anti-keap1-antibody-helps-uncover-targets-biomarker-potential/>

Lagerung

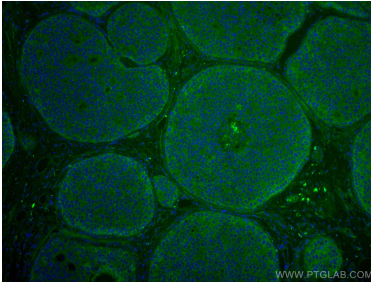
Lagerungsbedingungen:
Bei -20°C lagern. Vor Licht schützen.
Lagerungspuffer:
BS mit 50% Glycerin, 0,05% Proclin300, 0,5% BSA, pH 7,3.
Aliquotieren ist nicht notwendig bei -20°C Lagerung

*** 20ul-Größen enthalten 0.1% BSA

For technical support and original validation data for this product please contact:
T: 1 (888) 4PTGLAB (1-888-478-4522) (toll free in USA), or 1(312) 455-8498 (outside USA)
E: proteintech@ptglab.com
W: ptglab.com

This product is exclusively available under Proteintech Group brand and is not available to purchase from any other manufacturer.

Ausgewählte Validierungsdaten



Immunofluorescent analysis of (4% PFA) fixed human breast cancer tissue using CoraLite® Plus 488 KEAP1 antibody (CL488-10503) at dilution of 1:200.