

Nur für Forschungszwecke

Cytokeratin 6A Polyklonaler Antikörper

Katalog-Nr.:CL488-10590



Allgemeine Informationen

Katalog-Nr.: CL488-10590	GenBank-Zugangsnummer: BC008807	Reinigungsmethode: Antigen-Affinitätsreinigung
Größe: 100ul , Konzentration: 1000 µg/ml von3853	GeneID (NCBI): keratin 6A	Empfohlene Verdünnungen: IF 1:50-1:500
Nanodrop;	Vollständiger Name: keratin 6A	Anregungs-/Emissionsmaxima-Wellenlängen: 493 nm / 522 nm
Wirt: Kaninchen	Berechnete Masse: 60 kDa	
Isotyp: IgG		
Immunogen Katalognummer: AG0882		

Anwendungen

Geprüfte Anwendungen: FC (Intra), IF	Positivkontrollen: IF : A431-Zellen,
Getestete Reaktivität: Human, Maus, Ratte	

Hintergrundinformationen

Keratins are a large family of proteins that form the intermediate filament cytoskeleton of epithelial cells, which are classified into two major sequence types. Type I keratins are a group of acidic intermediate filament proteins, including K9-K23, and the hair keratins Ha1-Ha8. Type II keratins are the basic or neutral counterparts to the acidic type I keratins, including K1-K8, and the hair keratins, Hb1-Hb6. Keratin 6 is a type II keratin. It is used as marker for epidermal hyperproliferation and differentiation. There are three keratin 6 isoforms: keratin 6A, 6B and 6C. They share more than 99% identical DNA sequence.

Lagerung

Lagerungsbedingungen:
Bei -20°C lagern. Vor Licht schützen. Nach dem Versand ein Jahr stabil.
Lagerungspuffer:
BS mit 50% Glycerin, 0,05% Proclin300, 0,5% BSA, pH 7,3.
Aliquotieren ist nicht notwendig bei -20°C Lagerung

***** 20ul-Größen enthalten 0.1% BSA**

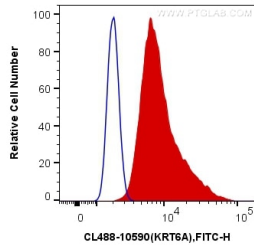
For technical support and original validation data for this product please contact:

T: 1 (888) 4PTGLAB (1-888-478-4522) (toll free in USA), or 1(312) 455-8498 (outside USA)

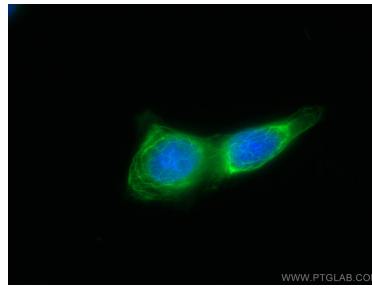
E: proteintech@ptglab.com
W: ptglab.com

This product is exclusively available under Proteintech Group brand and is not available to purchase from any other manufacturer.

Ausgewählte Validierungsdaten



1X10⁶ A431 cells were intracellularly stained with 0.4 ug CoraLite® Plus 488 Anti-Human Cytokeratin 6A (CL488-10590) (red), or 0.4 ug Control Antibody. Cells were fixed with 4% PFA and permeabilized with Flow Cytometry Perm Buffer (PF00011-C).



Immunofluorescent analysis of (-20°C Methanol) fixed A431 cells using CoraLite® Plus 488 Cytokeratin 6A antibody (CL488-10590) at dilution of 1:200.