

Nur für Forschungszwecke

ERAB Polyklonaler Antikörper

Katalog-Nr.:CL488-10648

Vorgestelltes Produkt



Allgemeine Informationen

Katalog-Nr.: CL488-10648	GenBank-Zugangsnummer: BC008708	Reinigungsmethode: Antigen-Affinitätsreinigung
Größe: 100ul , Konzentration: 1000 µg/ml von3028 Nanodrop;	GeneID (NCBI): 1000000000	Anregungs-/Emissionsmaxima-Wellenlängen: 493 nm / 522 nm
Wirt: Kaninchen	Vollständiger Name: hydroxysteroid (17-beta) dehydrogenase 10	
Isotyp: IgG	Berechnete Masse: 26 kDa	
Immunogen Katalognummer: AG1020	Beobachtete Masse: 27 kDa	

Anwendungen

Geprüfte Anwendungen:
FC (Intra)

Getestete Reaktivität:
Human, Maus, Ratte

Hintergrundinformationen

HSD17B10 (3-hydroxyacyl-CoA dehydrogenase type-2) is a multifunctional mitochondrial enzyme that acts on a wide spectrum of substrates, including neuroactive steroids, alcohols, leucine, and fatty acids, with a preference for short-chain methyl-branched acyl-CoAs(PMID:15860413).It has 2 isoforms produced by alternative splicing.Defects in HSD17B10 are the cause of 2-methyl-3-hydroxybutyryl-CoA dehydrogenase deficiency (MHBD deficiency) and mental retardation syndromic X-linked type 10 (MRXS10).

Lagerung

Lagerungsbedingungen:
Bei -20°C lagern. Vor Licht schützen.

Lagerungspuffer:
BS mit 50% Glycerin, 0,05% Proclin300, 0,5% BSA, pH 7,3.

Aliquotieren ist nicht notwendig bei -20°C Lagerung

*** 20ul-Größen enthalten 0.1% BSA

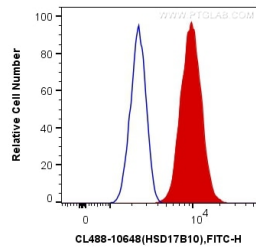
For technical support and original validation data for this product please contact:

T: 1 (888) 4PTGLAB (1-888-478-4522) (toll free
in USA), or 1(312) 455-8498 (outside USA)

E: proteintech@ptglab.com
W: ptglab.com

This product is exclusively available under Proteintech Group brand and is not available to purchase from any other manufacturer.

Ausgewählte Validierungsdaten



1X10⁶ MCF-7 cells were intracellularly stained with 0.4 ug CoraLite® Plus 488 Anti-Human ERAB (CL488-10648) (red), or 0.4 ug Control Antibody. Cells were fixed with 4% PFA and permeabilized with Flow Cytometry Perm Buffer (PF00011-C).