

Nur für Forschungszwecke

Cytokeratin 19 Polyklonaler Antikörper

Katalog-Nr.:CL488-10712



Allgemeine Informationen

Katalog-Nr.: CL488-10712	GenBank-Zugangsnummer: BC007628	Reinigungsmethode: Antigen-Affinitätsreinigung
Größe: 100ul , Konzentration: 1000 µg/ml von3880 Nanodrop;	GeneID (NCBI): keratin 19	Anregungs-/Emissionsmaxima-Wellenlängen: 493 nm / 522 nm
Wirt: Kaninchen	Vollständiger Name: keratin 19	
Isotyp: IgG	Berechnete Masse: 40 kDa	
Immunogen Katalognummer: AG1085		

Anwendungen

Geprüfte Anwendungen:
IF

Getestete Reaktivität:
Human, Maus

Hintergrundinformationen

Keratins are a large family of proteins that form the intermediate filament cytoskeleton of epithelial cells. Keratin expression is highly regulated, tissue specific, and varies according to cell-state. Type I keratins consist of acidic, low molecular weight proteins with MW ranging from 40 kDa (KRT19) to 64 kDa (KRT9). Type 2 keratins consist of basic or neutral, high molecular weight proteins with MW from 52 kDa (KRT8) to 67 kDa (KRT18). Keratin 19 is a type I cytokeratin. It is a biochemical marker of skin stem cells in vivo and in vitro.

Lagerung

Lagerungsbedingungen:
Bei -20°C lagern. Vor Licht schützen. Nach dem Versand ein Jahr stabil.

Lagerungspuffer:
BS mit 50% Glycerin, 0,05% Proclin300, 0,5% BSA, pH 7,3.

Aliquotieren ist nicht notwendig bei -20°C Lagerung

***** 20ul-Größen enthalten 0.1% BSA**

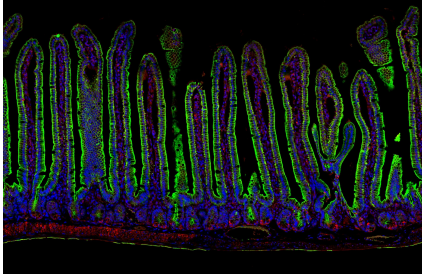
For technical support and original validation data for this product please contact:

T: 1 (888) 4PTGLAB (1-888-478-4522) (toll free in USA), or 1(312) 455-8498 (outside USA)

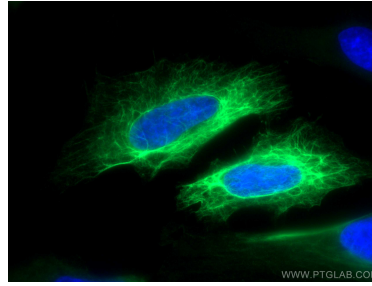
E: proteintech@ptglab.com
W: ptglab.com

This product is exclusively available under Proteintech Group brand and is not available to purchase from any other manufacturer.

Ausgewählte Validierungsdaten



▲
Adult mouse small intestine stained for Cytokeratin 19 (green, CL488-10712) and BMI1 (red, 10832-1-AP). BMI1 stains intestinal stem cells located at the base of the villi. As these stem cells differentiate into intestinal epithelial cells, they acquire Cytokeratin 19 expression. Cytokeratin 19 was conjugated to Coralite 488. Samples were fixed in 4% PFA, embedded in paraffin, and imaged on a confocal microscope. Image credit: @Immunofluorescence on Instagram.
▼



Immunofluorescent analysis of (-20°C Methanol) fixed HeLa cells using CoraLite® Plus 488 Cytokeratin 19 antibody (CL488-10712) at dilution of 1:200.