

Nur für Forschungszwecke

Cytokeratin 18 Polyklonaler Antikörper

Katalog-Nr.:CL488-10830



Allgemeine Informationen

Katalog-Nr.: CL488-10830	GenBank-Zugangsnummer: BC000180	Reinigungsmethode: Antigen-Affinitätsreinigung
Größe: 100ul , Konzentration: 1000 µg/ml von3875 Nanodrop;	GeneID (NCBI): keratin 18	Empfohlene Verdünnungen: WB 1:1000-1:4000 IF 1:50-1:500
Wirt: Kaninchen	Vollständiger Name: keratin 18	Anregungs-/Emissionsmaxima-Wellenlängen: 493 nm / 522 nm
Isotyp: IgG	Berechnete Masse: 48 kDa	
Immunogen Katalognummer: AG1260	Beobachtete Masse: 48 kDa	

Anwendungen

Geprüfte Anwendungen: FC (Intra), IF, WB	Positivkontrollen:
Getestete Reaktivität: Human, Maus	WB : A431-Zellen, HeLa-Zellen, K-562-Zellen, MCF-7-Zellen IF : HeLa-Zellen, HepG2-Zellen

Hintergrundinformationen

Keratins are a large family of proteins that form the intermediate filament cytoskeleton of epithelial cells, which are classified into two major sequence types. Type I keratins are a group of acidic intermediate filament proteins, including K9-K23, and the hair keratins Ha1-Ha8. Type II keratins are the basic or neutral counterparts to the acidic type I keratins, including K1-K8, and the hair keratins, Hb1-Hb6. KRT18, also named as CYK18, PIG46 and K18, is the most commonly found members of the intermediate filament gene family. KRT18 is a type I keratin which is found primarily in non squamous epithelia and is present in a majority of adenocarcinomas and ductal carcinomas but not in squamous cell carcinomas.

Lagerung

Lagerungsbedingungen:
Bei -20°C lagern. Vor Licht schützen.
Lagerungspuffer:
BS mit 50% Glycerin, 0,05% Proclin300, 0,5% BSA, pH 7,3.
Aliquotieren ist nicht notwendig bei -20°C Lagerung

***** 20ul-Größen enthalten 0.1% BSA**

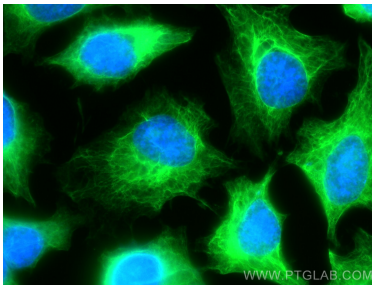
For technical support and original validation data for this product please contact:

T: 1 (888) 4PTGLAB (1-888-478-4522) (toll free in USA), or 1(312) 455-8498 (outside USA)

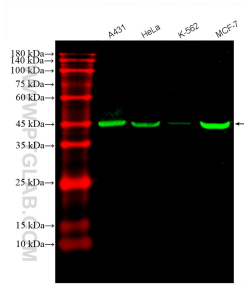
E: proteintech@ptglab.com
W: ptglab.com

This product is exclusively available under Proteintech Group brand and is not available to purchase from any other manufacturer.

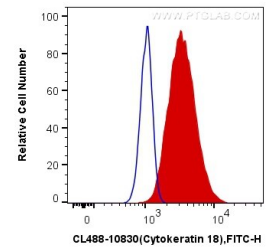
Ausgewählte Validierungsdaten



Immunofluorescent analysis of (-20°C Methanol) fixed HeLa cells using CoraLite® Plus 488 Cytokeratin 18 antibody (CL488-10830) at dilution of 1:200.



Various lysates were subjected to SDS PAGE followed by western blot with CL488-10830 (Cytokeratin 18 antibody) at dilution of 1:2000 incubated at room temperature for 1.5 hours.



1X10⁶ HeLa cells were intracellularly stained with 0.4 ug CoraLite® Plus 488 Anti-Human Cytokeratin 18 (CL488-10830) (red), or 0.4 ug Control Antibody. Cells were fixed with 4% PFA and permeabilized with Flow Cytometry Perm Buffer (PF00011-C).