

Nur für Forschungszwecke

GABARAPL1-Specific Polyklonaler Antikörper



Katalog-Nr.:CL488-11010

Vorgestelltes Produkt

Allgemeine Informationen

Katalog-Nr.: CL488-11010	GenBank-Zugangsnummer: BC009309	Reinigungsmethode: Antigen-affinitätsgereinigt
Größe: 100ul , Konzentration: 1000 µg/ml von23710 Nanodrop;	GeneID (NCBI): Vollständiger Name: GABA(A) receptor-associated protein like 1	Empfohlene Verdünnungen: IF 1:50-1:500
Wirt: Kaninchen	Berechnete Masse: 14 kDa	Anregungs-/Emissionsmaxima-Wellenlängen: 493 nm / 522 nm
Isotyp: IgG	Beobachtete Masse: 16 kDa	
Immunogen Katalognummer: AG1473		

Anwendungen

Geprüfte Anwendungen:

IF

Getestete Reaktivität:

Human, Maus, Ratte

Positivkontrollen:

IF : mit Chloroquin behandelte HepG2-Zellen,

Hintergrundinformationen

GABARAPL1 (GABARAP-like protein 1), also named as ATG8, GEC1, APG8L, ATG8L and APG8-LIKE, is a member of GABARP (GABAA receptor-associated protein) family. GABARAPL1 was initially identified as estrogen-regulated gene and the protein acts in receptor and vesicle transport. It's also involved in the process of autophagy like GABARAP and GABARAPL2, and may be considered as an autophagic marker. It is expressed at very high levels in the brain, heart, peripheral blood leukocytes, liver, kidney, placenta and skeletal muscle and at very low levels in thymus and small intestine. The antibody is specific to GABARAPL1, and it doesn't recognize the recombinant GABARAP and GABARAPL2.

Lagerung

Lagerungsbedingungen:

Bei -20°C lagern. Vor Licht schützen. Nach dem Versand ein Jahr stabil.

Lagerungspuffer:

BS mit 50% Glycerin, 0,05% Proclin300, 0,5% BSA, pH 7,3.

Aliquotieren ist nicht notwendig bei -20°C Lagerung

*** 20ul-Größen enthalten 0.1% BSA

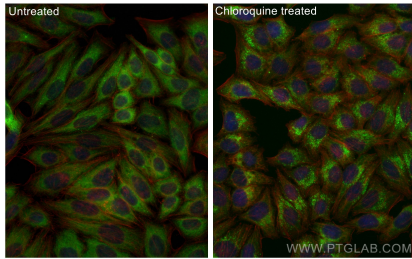
For technical support and original validation data for this product please contact:

T: 1 (888) 4PTGLAB (1-888-478-4522) (toll free in USA), or 1(312) 455-8498 (outside USA)

E: proteintech@ptglab.com
W: ptglab.com

This product is exclusively available under Proteintech Group brand and is not available to purchase from any other manufacturer.

Ausgewählte Validierungsdaten



Immunofluorescent analysis of (-20°C Ethanol) fixed Chloroquine treated HepG2 cells using CoraLite® Plus 488 GABARAPL1-Specific antibody (CL488-11010) at dilution of 1:200, CL594-Phalloidin (red).