

Nur für Forschungszwecke

# ENO1 Polyklonaler Antikörper

Katalog-Nr.:CL488-11204

Vorgestelltes Produkt



## Allgemeine Informationen

<b>Katalog-Nr.:</b> CL488-11204	<b>GenBank-Zugangsnummer:</b> BC015641	<b>Reinigungsmethode:</b> Antigen-Affinitätsreinigung
<b>Größe:</b> 100ul , Konzentration: 1000 µg/ml von2023	<b>GeneID (NCBI):</b> enolase 1, (alpha)	<b>Empfohlene Verdünnungen:</b> IF 1:200-1:800
<b>Nanodrop;</b>	<b>Vollständiger Name:</b> enolase 1, (alpha)	<b>Anregungs-/Emissionsmaxima-Wellenlängen:</b> 493 nm / 522 nm
<b>Wirt:</b> Kaninchen	<b>Berechnete Masse:</b> 47 kDa	
<b>Isotyp:</b> IgG	<b>Beobachtete Masse:</b> 47 kDa	
<b>Immunogen Katalognummer:</b> AG1692		

## Anwendungen

<b>Geprüfte Anwendungen:</b> FC (Intra), IF	<b>Positivkontrollen:</b> IF : HepG2-Zellen,
<b>Getestete Reaktivität:</b> Human, Maus, Ratte	

## Hintergrundinformationen

Enolase is an important glycolytic enzyme involved in the interconversion of 2-phosphoglycerate to phosphoenolpyruvate. Enolase were down-regulated in oxLDL-treated cells or in VLDL-treated cells. And it identified which are associated with glucose metabolism were down-regulated in the process of foam cells formation. (19756395)

## Lagerung

**Lagerungsbedingungen:**  
Bei -20°C lagern. Vor Licht schützen.  
**Lagerungspuffer:**  
BS mit 50% Glycerin, 0,05% Proclin300, 0,5% BSA, pH 7,3.  
Aliquotieren ist nicht notwendig bei -20°C Lagerung

\*\*\* 20ul-Größen enthalten 0.1% BSA

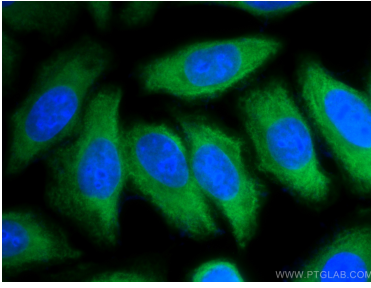
For technical support and original validation data for this product please contact:

T: 1 (888) 4PTGLAB (1-888-478-4522) (toll free in USA), or 1(312) 455-8498 (outside USA)

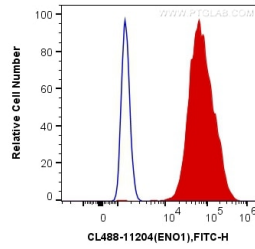
E: proteintech@ptglab.com  
W: ptglab.com

This product is exclusively available under Proteintech Group brand and is not available to purchase from any other manufacturer.

## Ausgewählte Validierungsdaten



Immunofluorescent analysis of (-20°C Methanol) fixed HepG2 cells using CoraLite® Plus 488 ENO1 antibody (CL488-11204) at dilution of 1:400.



1X10<sup>6</sup> HeLa cells were intracellularly stained with 0.4 ug CoraLite® Plus 488 Anti-Human ENO1 (CL488-11204) (red), or 0.4 ug Control Antibody. Cells were fixed with 4% PFA and permeabilized with Flow Cytometry Perm Buffer (PF00011-C).