

Nur für Forschungszwecke

Podoplanin Polyklonaler Antikörper

Katalog-Nr.:CL488-11629



Allgemeine Informationen

Katalog-Nr.: CL488-11629	GenBank-Zugangsnummer: BC022812	Reinigungsmethode: Antigen-affinitätsgereinigt
Größe: 100ul , Konzentration: 1000 µg/ml von10630	GeneID (NCBI): 10630	Anregungs-/Emissionsmaxima-Wellenlängen: 493 nm / 522 nm
Nanodrop;	Vollständiger Name: podoplanin	
Wirt: Kaninchen	Berechnete Masse: 17 kDa, 25 kDa	
Isotyp: IgG	Beobachtete Masse: 43 kDa	
Immunogen Katalognummer: AG2201		

Anwendungen

Geprüfte Anwendungen:
FC (Intra)

Getestete Reaktivität:
Human

Hintergrundinformationen

Podoplanin was identified as a 43 kDa glycoprotein found in the cell membranes of glomerular epithelial cells (podocyte) (PMID: 9327748). It is a lymphatic marker because the expression of podoplanin has been detected in lymphatic but not blood vascular endothelium, and is useful as the marker of tumor-associated Lymphangiogenesis. Podoplanin has a function in developing testis, most likely at the level of cell-cell interactions among pre-meiotic germ cells and immature Sertoli cells. It may be involved in cell migration and/or actin cytoskeleton organization. When expressed in keratinocytes, PDPN induces changes in cell morphology with transfected cells showing an elongated shape, numerous membrane protrusions, major reorganization of the actin cytoskeleton, increased motility and decreased cell adhesion. It is required for normal lung cell proliferation and alveolus formation at birth. PDPN induces platelet aggregation. It does not have any effect on folic acid or amino acid transport and does not function as a water channel or as a regulator of aquaporin-type water channels. The antibody is specific to Podoplanin.

Lagerung

Lagerungsbedingungen:
Bei -20°C lagern. Vor Licht schützen. Nach dem Versand ein Jahr stabil.

Lagerungspuffer:
BS mit 50% Glycerin, 0,05% Proclin300, 0,5% BSA, pH 7,3.

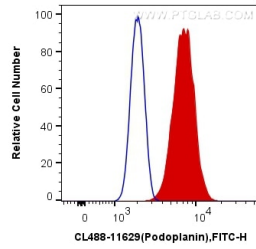
Aliquotieren ist nicht notwendig bei -20°C Lagerung

***** 20ul-Größen enthalten 0.1% BSA**

For technical support and original validation data for this product please contact:
T: 1 (888) 4PTGLAB (1-888-478-4522) (toll free in USA), or 1(312) 455-8498 (outside USA) E: proteintech@ptglab.com W: ptglab.com

This product is exclusively available under Proteintech Group brand and is not available to purchase from any other manufacturer.

Ausgewählte Validierungsdaten



1X10⁶ HEK-293 cells were intracellularly stained with 0.2 ug CoraLite® Plus 488 Anti-Human Podoplanin (CL488-11629) (red), or 0.2 ug Control Antibody. Cells were fixed with 4% PFA and permeabilized with Flow Cytometry Perm Buffer (PF00011-C).