

Nur für Forschungszwecke

ASGR1 Polyklonaler Antikörper

Katalog-Nr.:CL488-11739



Allgemeine Informationen

Katalog-Nr.: CL488-11739	GenBank-Zugangsnummer: BC032130	Reinigungsmethode: Antigen-Affinitätsreinigung
Größe: 100ul , Konzentration: 1000 µg/ml von432 Nanodrop;	GeneID (NCBI): asialoglycoprotein receptor 1	Empfohlene Verdünnungen: IF 1:50-1:500
Wirt: Kaninchen	Vollständiger Name: asialoglycoprotein receptor 1	Anregungs-/Emissionsmaxima-Wellenlängen: 493 nm / 522 nm
Isotyp: IgG	Berechnete Masse: 291 aa, 33 kDa	
Immunogen Katalognummer: AG2310		

Anwendungen

Geprüfte Anwendungen: FC (Intra), IF	Positivkontrollen: IF : humanes Leberkarzinomgewebe,
Getestete Reaktivität: Human, Maus, Ratte	

Hintergrundinformationen

Asialoglycoprotein receptor (ASGPR), also known as the hepatic galactose/N-acetylglucosamine (GlcNAc) receptor or Ashwell receptor, is a C-type lectin expressed exclusively in hepatic parenchymal cells. ASGPR consists of two subunits, a major subunit (ASGR1, HL-1) and a minor subunit (ASGR2, HL-2), and specifically recognizes terminal β -linked galactose or GlcNAc on circulating glycoproteins or cells. This receptor plays a critical role in serum glycoprotein homeostasis by mediating the endocytosis and lysosomal degradation of glycoproteins that contain terminal galactose or GlcNAc residues. ASGPR may facilitate hepatic infection by multiple viruses including hepatitis B, and is also a target for liver-specific drug delivery. This antibody is conjugated with CL488, Ex/Em 488 nm/515 nm.

Lagerung

Lagerungsbedingungen:
Bei -20°C lagern. Vor Licht schützen. Nach dem Versand ein Jahr stabil.
Lagerungspuffer:
BS mit 50% Glycerin, 0,05% Proclin300, 0,5% BSA, pH 7,3.
Aliquotieren ist nicht notwendig bei -20°C Lagerung

***** 20ul-Größen enthalten 0.1% BSA**

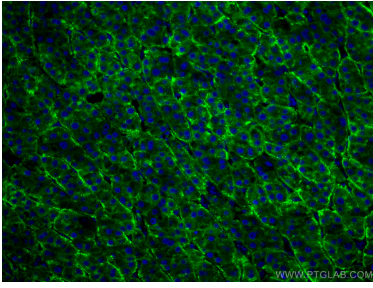
For technical support and original validation data for this product please contact:

T: 1 (888) 4PTGLAB (1-888-478-4522) (toll free in USA), or 1(312) 455-8498 (outside USA)

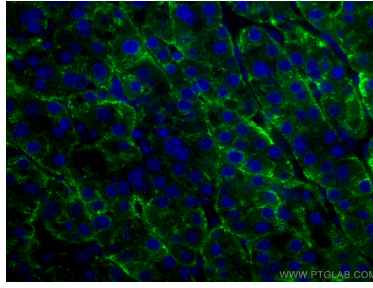
E: proteintech@ptglab.com
W: ptglab.com

This product is exclusively available under Proteintech Group brand and is not available to purchase from any other manufacturer.

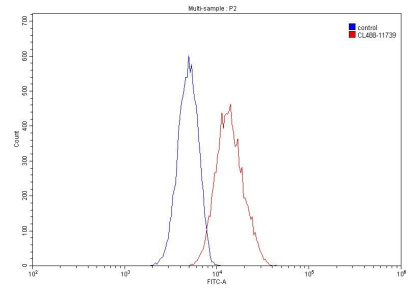
Ausgewählte Validierungsdaten



Immunofluorescent analysis of (4% PFA) fixed human liver cancer tissue using CoraLite® Plus 488 ASGR1 antibody (CL488-11739) at dilution of 1:200.



Immunofluorescent analysis of (4% PFA) fixed human liver cancer tissue using CoraLite® Plus 488 ASGR1 antibody (CL488-11739) at dilution of 1:200.



1X10⁶ HepG2 cells were stained with 0.20ug ASGR1 antibody (CL488-11739, red) and control antibody (blue). Fixed with 90% MeOH.